

WATER / OIL BRAZED PLATE OIL COOLER

HEAT EXCHANGERS

HEAT-EXCHANGERS

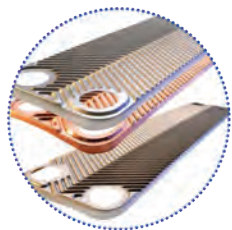
WB SERIES





Brazed Plate Technology

Stainless steel brazed plate construction is one of the most advanced fluid cooling technologies available. This design has several significant features:



Copper Brazed
Stainless Steel Plates

SAE O-Ring Oil Connections

Technical Data

Compatible Fluids

- Mineral Oils: HL & HLP
- Water – Oil Emulsion
- Water – Glycol
- Consult factory for other fluids

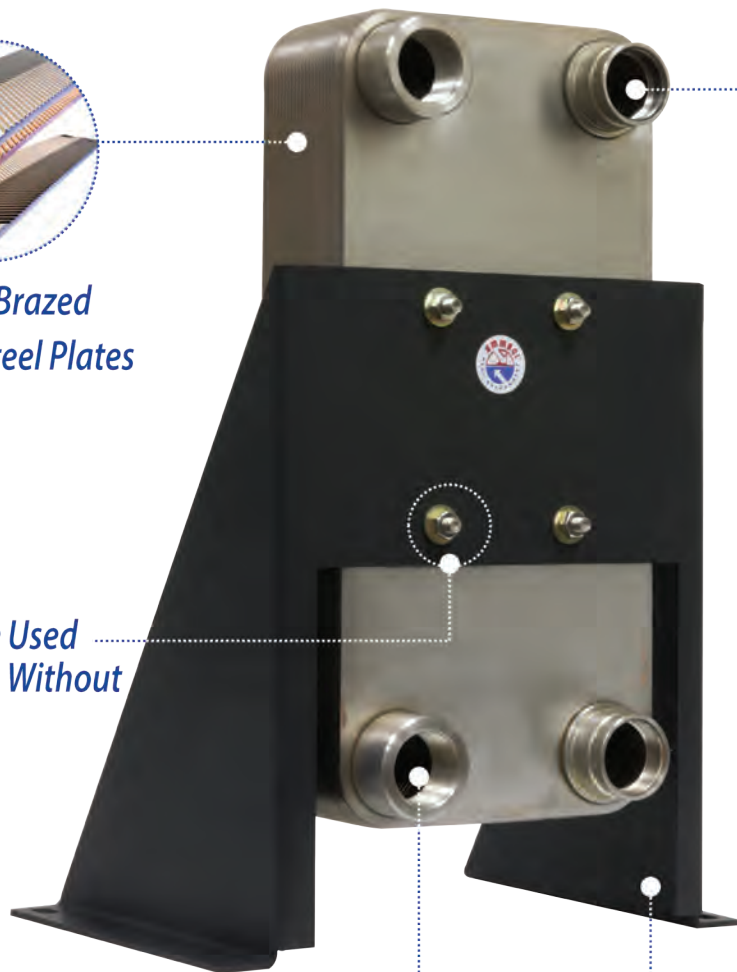
Ratings

- Operating Pressure: 435 PSI
- Max Operating Temperature: 435°F

Materials

- Plates & Connections:
AISI 316L Stainless Steel
- Brazing Sheets:
Copper
- Mounting Brackets:
Powder Painted Steel

Studs May Be Used
for Mounting Without
Foot Bracket



NPT Water Connections

Mounting Foot
For Ease of Installation

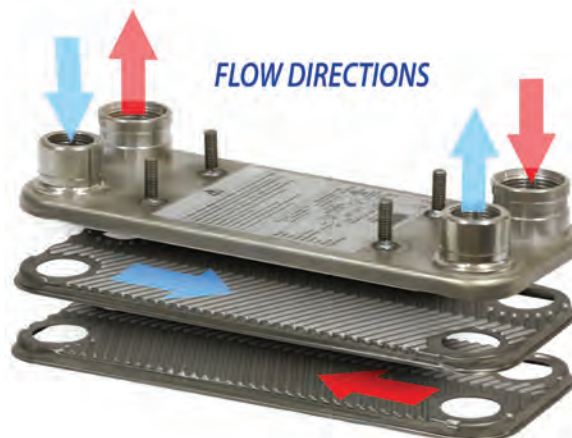
Installation Information

Corrosion Resistant: Stainless steel plates and fittings provide long service life.



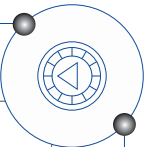
Cutaway shows high density,
compact brazed plate
construction

Compact Performance: Up to 50% smaller in size than traditional shell & tube construction.

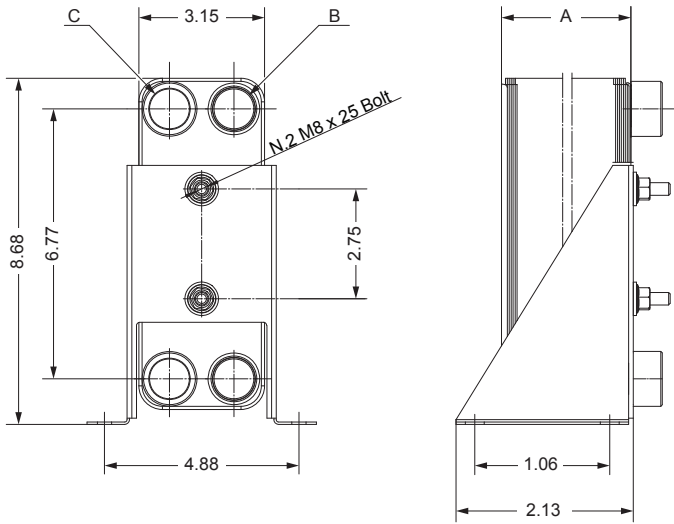
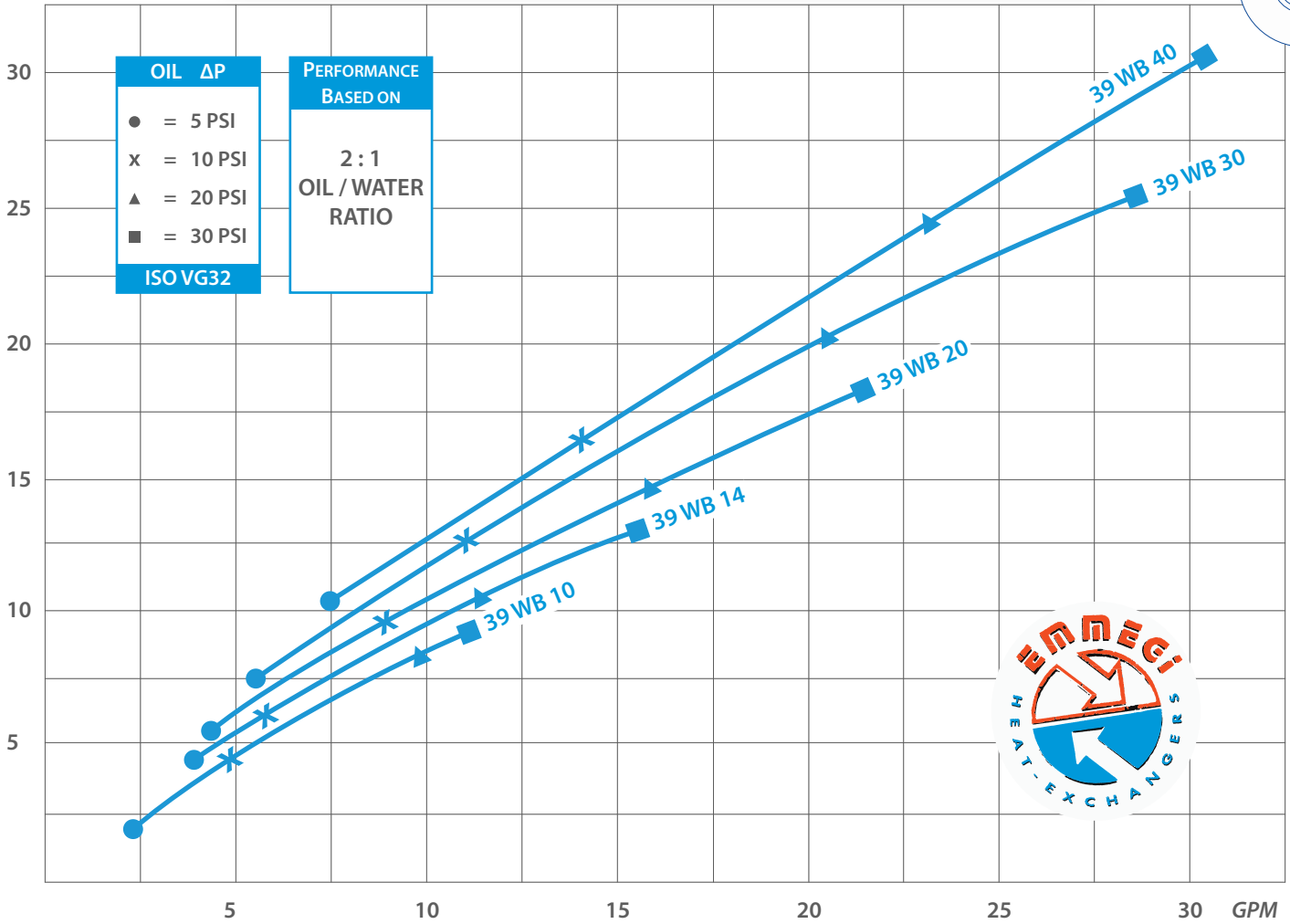


FLOW DIRECTIONS

39 WB Series - Dimensions & Performance

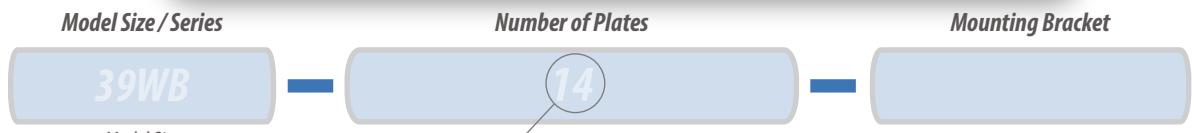


Horsepower Heat Rejection @ 50°F ETD



MODEL	A (inch)	OIL CONNECTIONS		NET WEIGHT LBS.
		B OIL	C WATER	
39 WB 10	1.32	# 10 SAE	1/2" NPT	2.4
39 WB 14	1.70			3.0
39 WB 20	2.28	# 12 SAE	3/4" NPT	3.8
39 WB 30	3.25			5.1
39 WB 40	4.21			6.4

Ordering Code



39WB = 3" x 9"

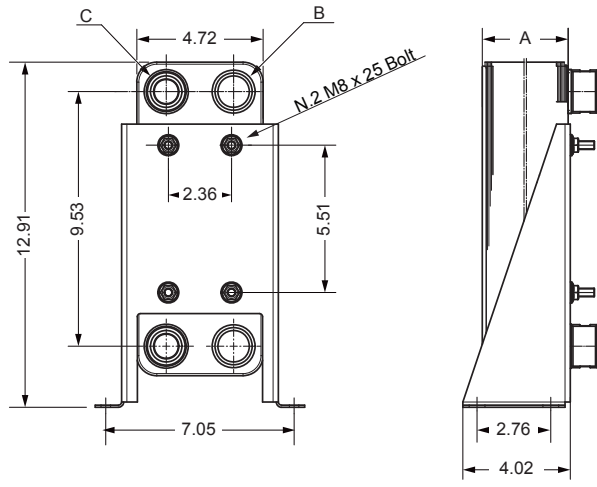
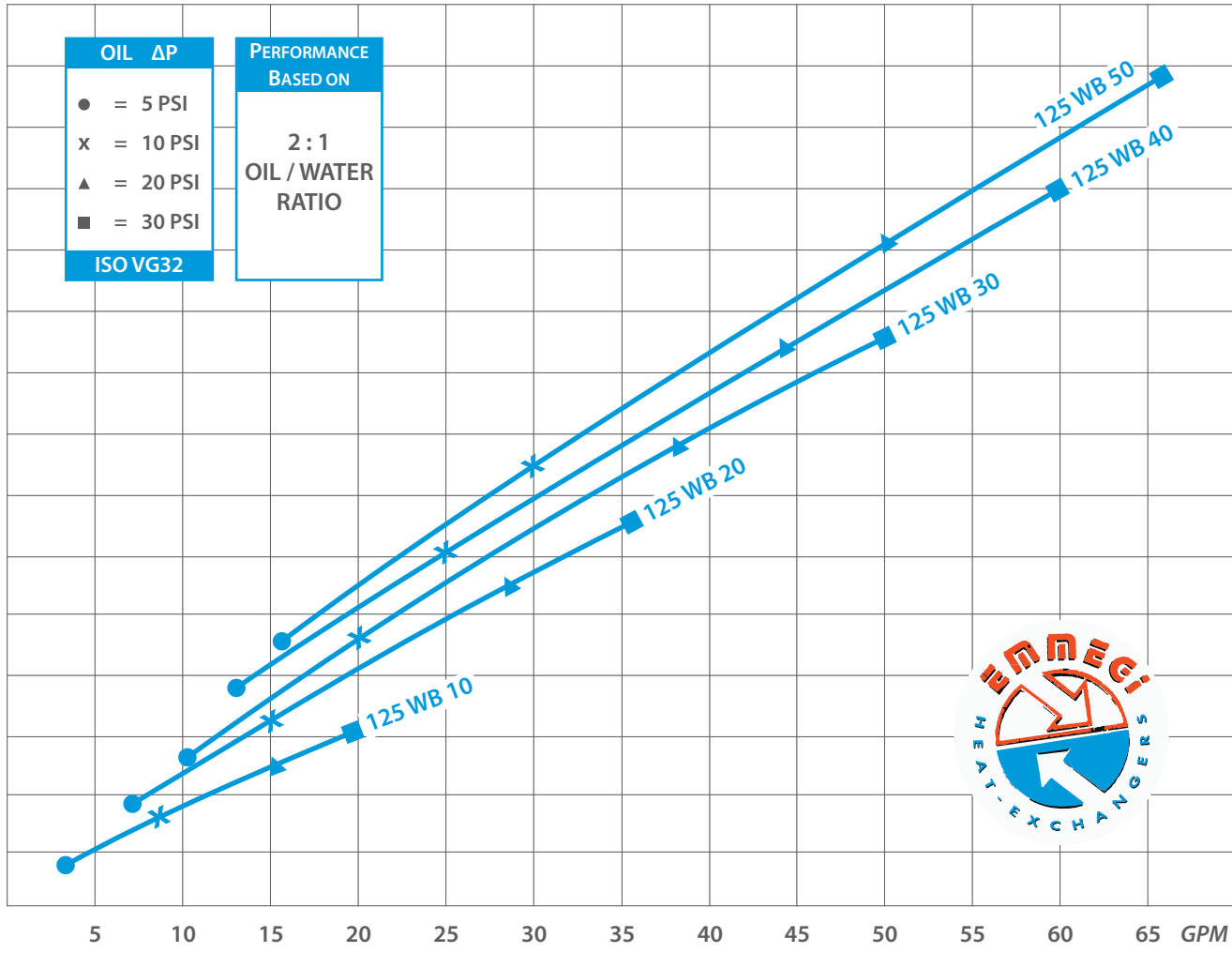
10 14 20 30 40

Blank Includes Mounting Bracket
NB No Mounting Bracket

HEAT-EXCHANGERS

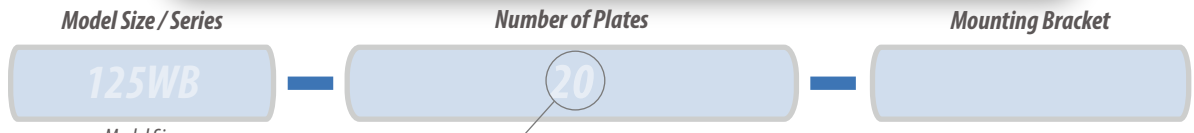
125 WB Series - Dimensions & Performance

Horsepower Heat Rejection @ 50°F ETD



MODEL	A (inch)	OIL CONNECTIONS		NET WEIGHT LBS.
		B OIL	C WATER	
125 WB 10	1.28	# 16 SAE	3/4 NPT	6.2
125 WB 20	2.24			8.7
125 WB 30	3.21			11.2
125 WB 40	4.17	# 20 SAE	1 NPT	13.6
125 WB 50	5.12			16.1

Ordering Code

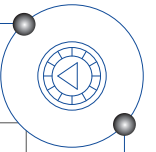


125 WB = 12" x 5"

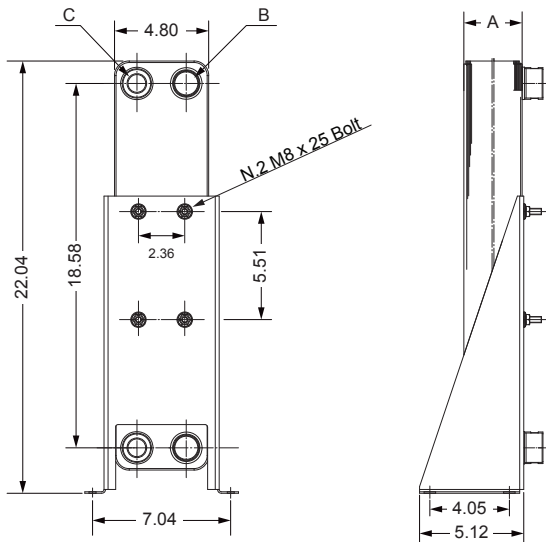
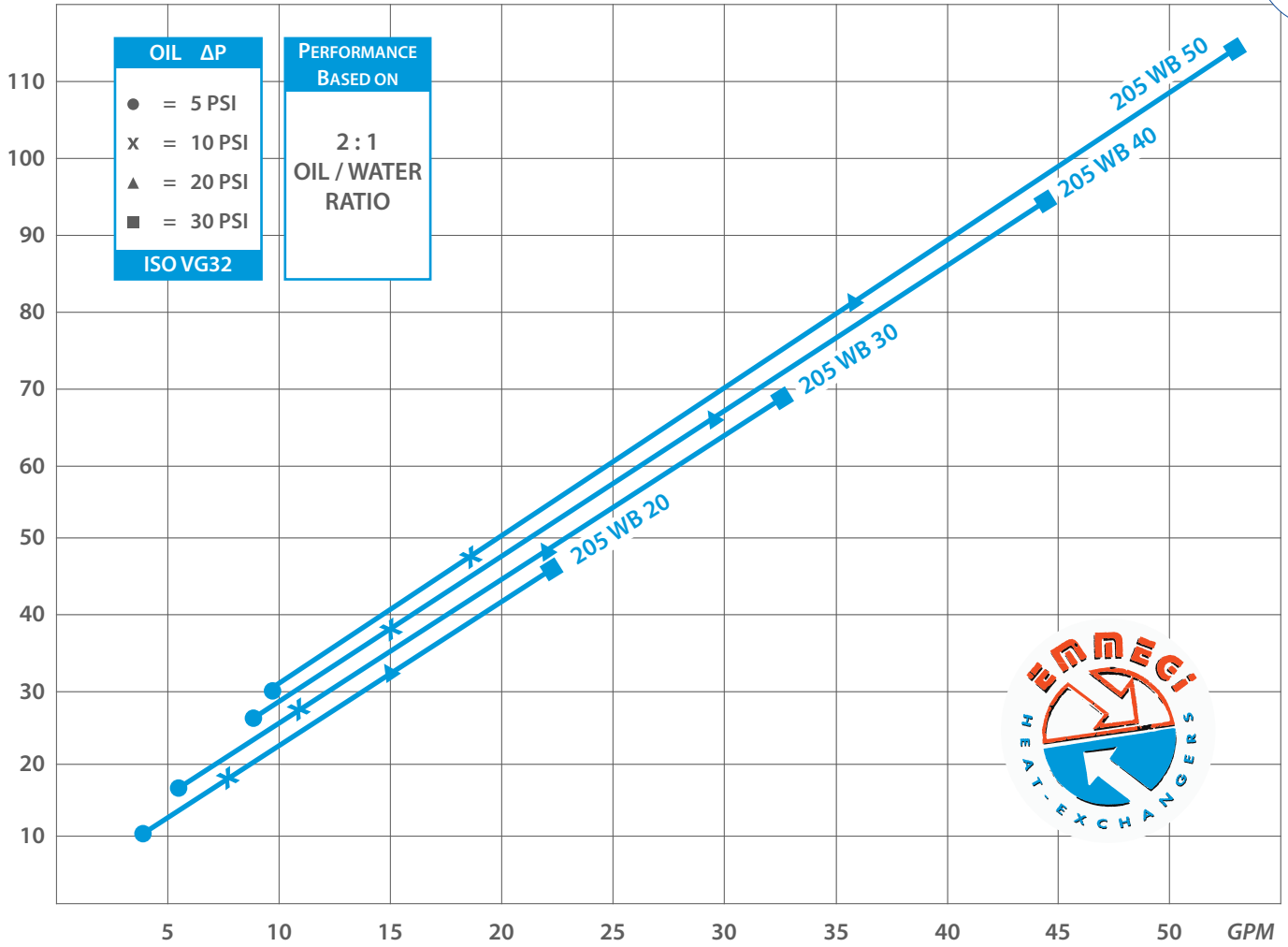
10 20 30 40 50

Blank Includes Mounting Bracket
NB No Mounting Bracket

205 WB Series - Dimensions & Performance

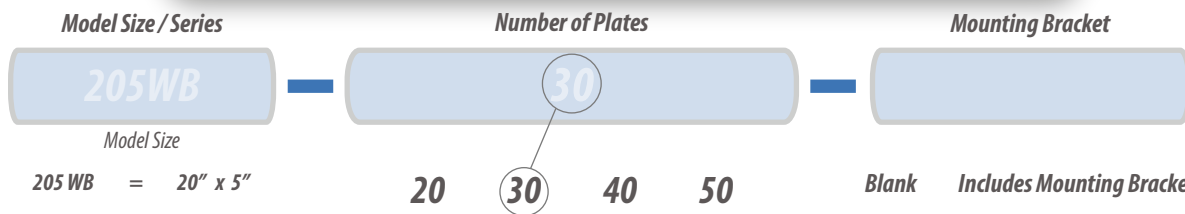


Horsepower Heat Rejection @ 50°F ETD



MODEL	A (inch)	OIL CONNECTIONS		NET WEIGHT LBS.
		B OIL	C WATER	
205 WB 20	2.09	# 16 SAE	3/4 NPT	14.6
205 WB 30	2.97			19.1
205 WB 40	3.86	# 20 SAE	1 NPT	23.7
205 WB 50	4.74			28.2

Ordering Code



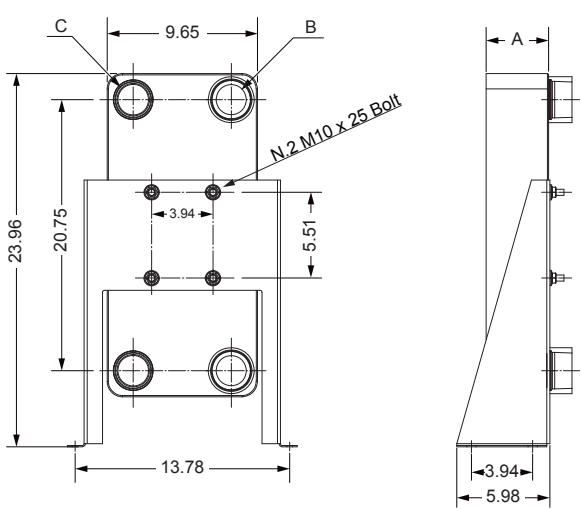
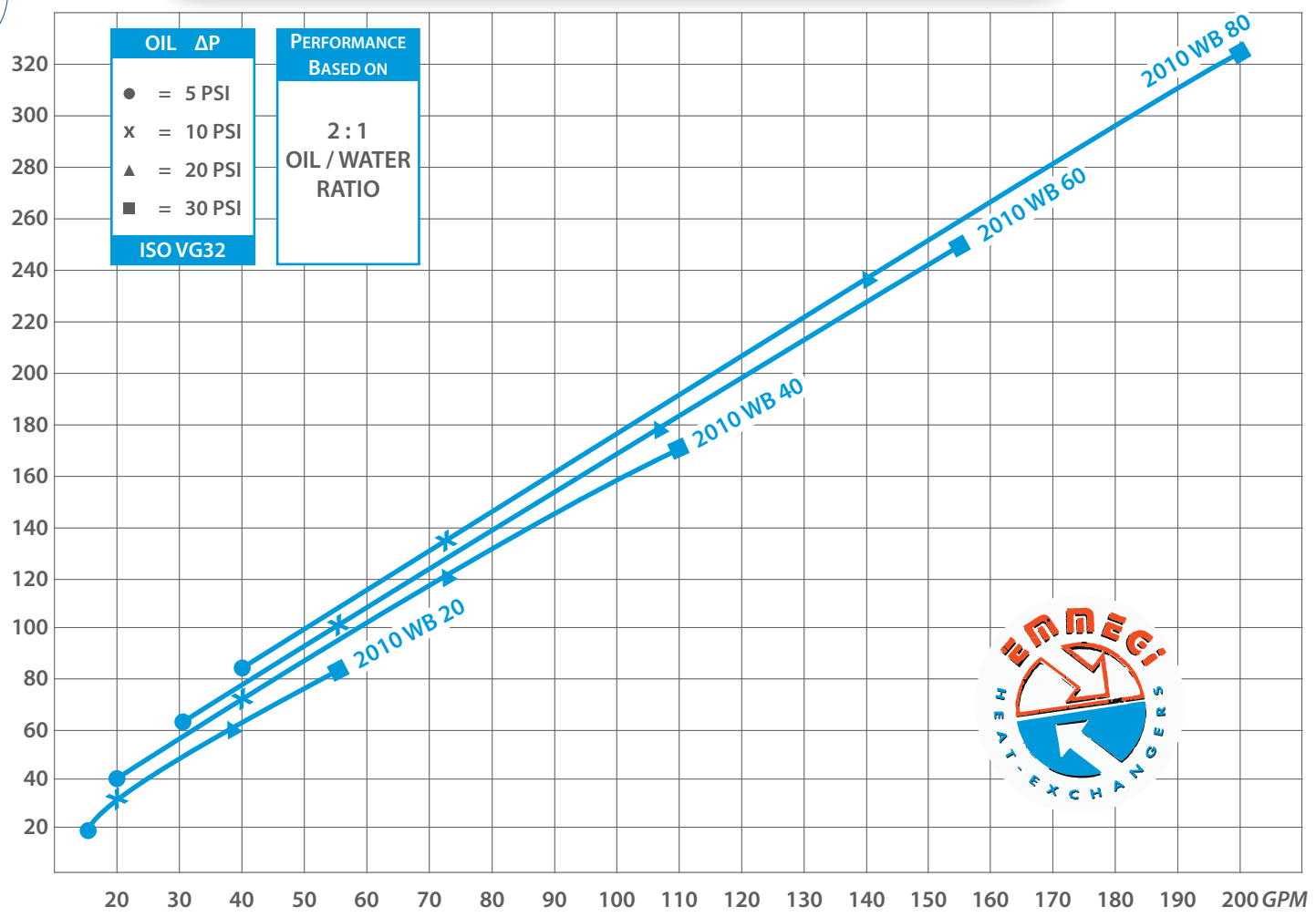
205 WB = 20" x 5"

Blank Includes Mounting Bracket
NB No Mounting Bracket

HEAT-EXCHANGERS

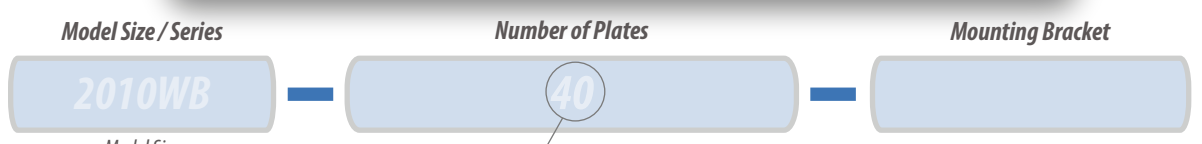
2010 WB Series - Dimensions & Performance

Horsepower Heat Rejection @ 50°F ETD



MODEL	A (inch)	OIL CONNECTIONS		NET WEIGHT LBS.
		B OIL	C WATER	
2010 WB 20	2.09	# 20 SAE	1¼ NPT	38.2
2010 WB 40	4.02	# 24 SAE	1½ NPT	56.2
2010 WB 60	5.94	# 32 SAE	2 NPT	74.0
2010 WB 80	9.80			91.9

Ordering Code

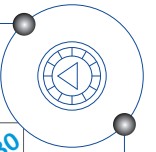


2010WB = 20" x 10"

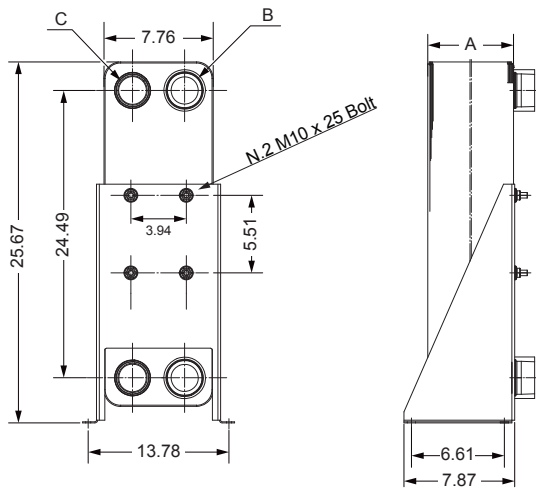
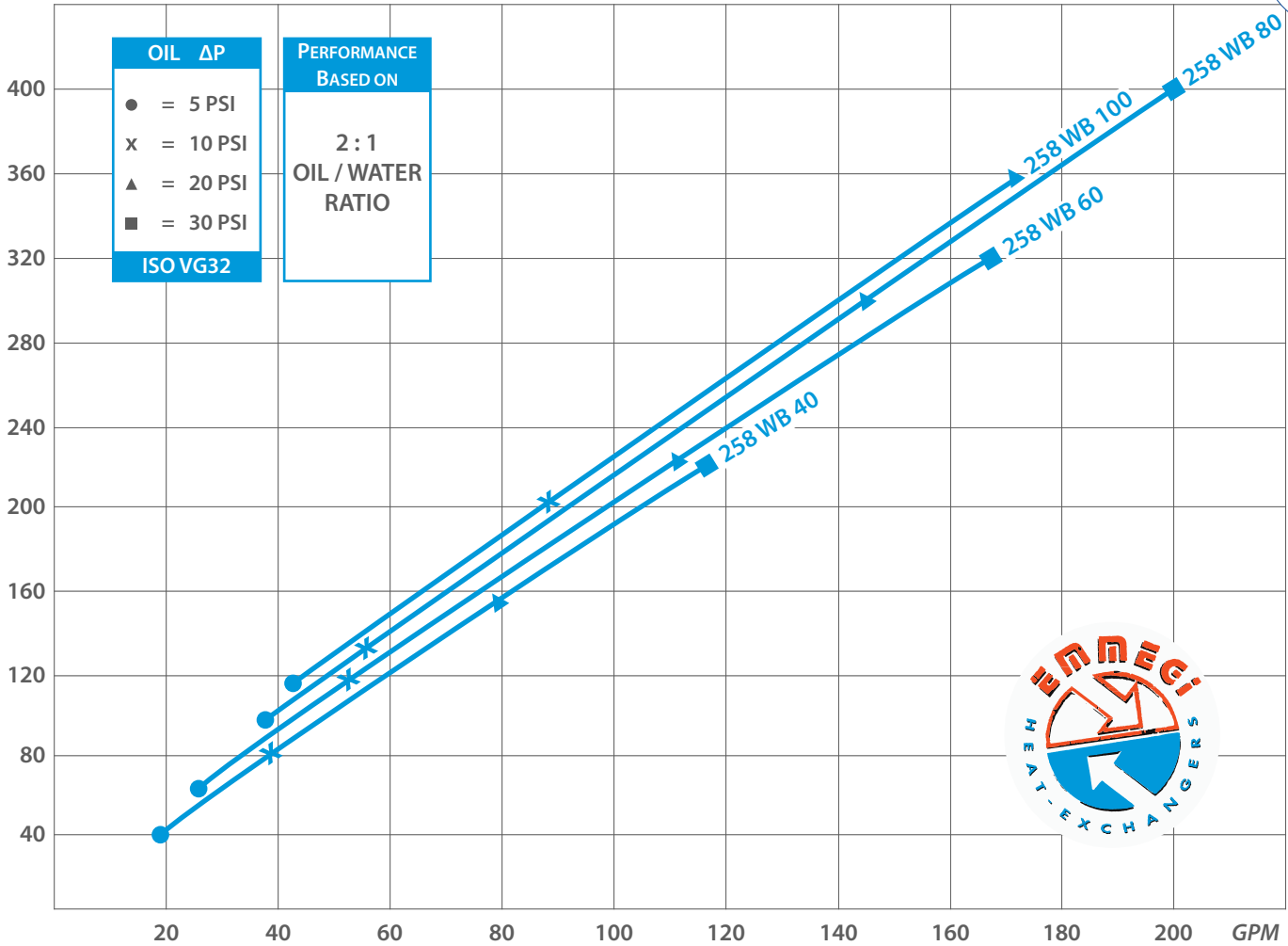
20 40 60 80

Blank Includes Mounting Bracket
NB No Mounting Bracket

258 WB Series - Dimensions & Performance

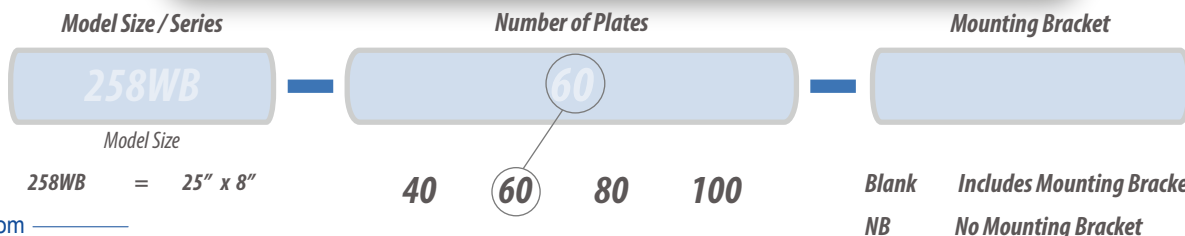


Horsepower Heat Rejection @ 50°F ETD



MODEL	A (inch)	OIL CONNECTIONS		NET WEIGHT LBS.
		B OIL	C WATER	
258 WB 40	4.17	# 24	1 1/4 NPT	49.1
258 WB 60	6.10	# 32 SAE	2 NPT	75.2
258 WB 80	8.03			109.1
258 WB 100	9.96			126.6

Ordering Code



HEAT-EXCHANGERS

Thermostatic Operated Water Valves



Normally closed valve opens on rising temperature at the sensing bulb/bulbwell. Modulates water flow into cooler without the need for any other external input. Typically the sensing bulb/bulbwell are installed in the reservoir.

Installation

An arrow on the valve body indicates the flow direction.

The installation of a WYE Strainer ahead of the valve is recommended.

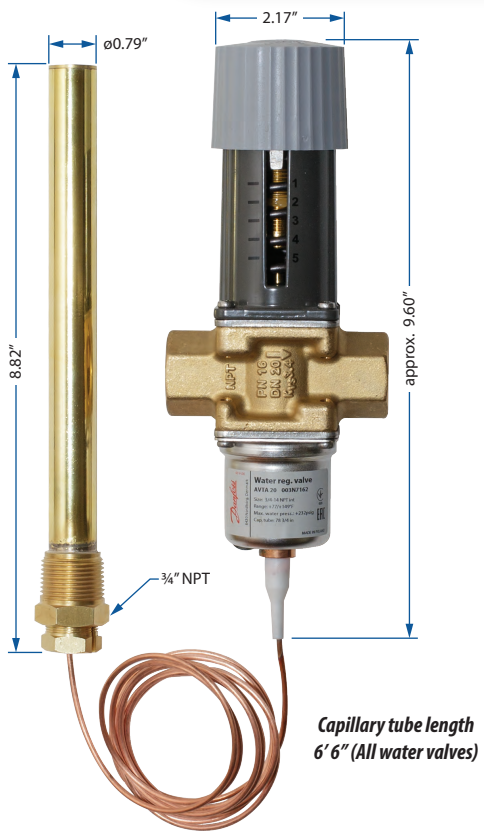
Care should be taken to not kink the capillary tube during/after installation.

Details

Max operating temp: -13°F - 266°F

Max working pressure: 232 PSI

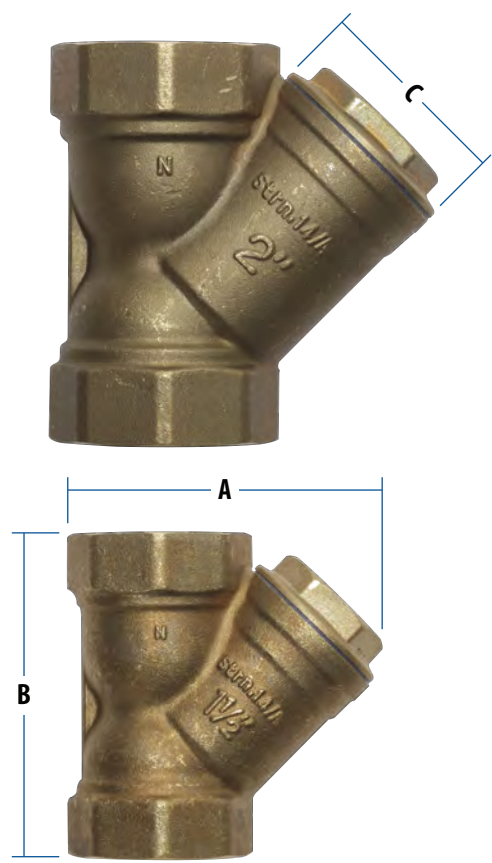
Part numbers include both valve and bulbwell



Part Number	Female NPT	Adjustable Temperature Ranges	Max Flow Rate GPM	Weight LBS
AVTA - 0.5 - BW	104°F	77°F - 149°F 25°C - 65°F	25	3.2
AVTA - 0.75 - BW	122°F		44	3.3
AVTA - 1.0 - BW	140°F		65	3.6

Bronze WYE Strainer

- Max Pressure = 125 PSI
- 50 Mesh Screens



Part Number	Female NPT	A Inches	B Inches	C Inches	Weight LBS
WYE 050	1/2"	2.1	2.3	1.0	0.2
WYE 075	3/4"	2.4	2.7	1.3	0.4
WYE 100	1"	2.4	2.9	1.6	0.6
WYE 125	1 1/4"	3.6	3.6	2.0	1.2
WYE 150	1 1/2"	3.8	4.0	2.3	1.6
WYE 200	2"	4.7	5.0	2.9	2.6