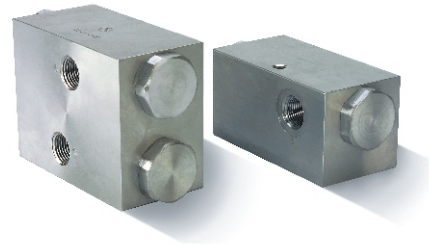


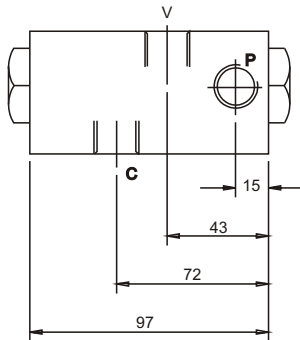
LOCK CHECK VALVE - DLVT / SLVT



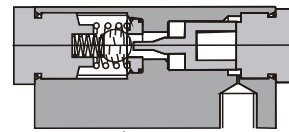
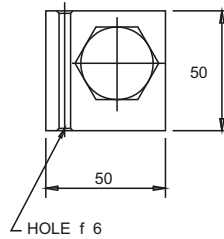
- MAX. OPERATING PRESSURE 200 BAR
- MAX FLOW 30 LPM / TEMP 80° C
- PILOT PISTON RATIO 1 : 4
- STURDY ALUMINIUM ALLOY BODY
- STEEL SEAT / BALL



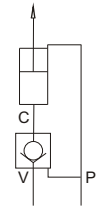
SINGLE



V - VALVE PORT
P - PILOT PORT
C - CYLINDER PORT



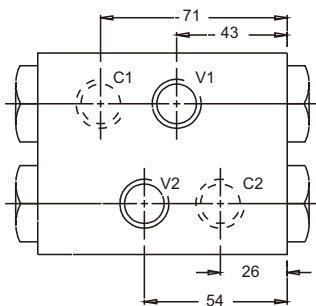
WT : - 0.7 KGS



MODEL CODE : ASSEMBLY

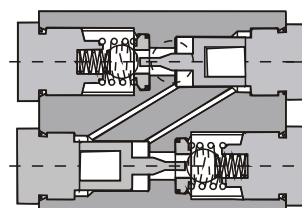
*LV T	- 03	N
SERIES	PORT INCH	PORT THREAD
SLVT SINGLE	03 - 3/8"	B - BSPP (STD)
DLVT DOUBLE		N - NPT (OPTIONAL)

DOUBLE

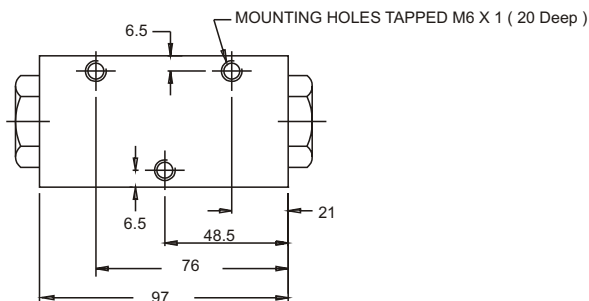
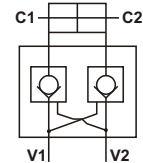


V1 / V2 - VALVE PORT

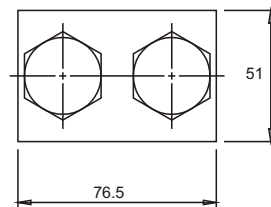
C1 / C2 - CYLINDER PORT



WT : - 1.2 KGS



MOUNTING HOLES TAPPED M6 X 1 (20 Deep)



OPTIONAL / SPECIAL FEATURE - OMIT IF NOT REQUIRED