



DUEL COUNTER BALANCE VALVE

Model : 2CB06T03

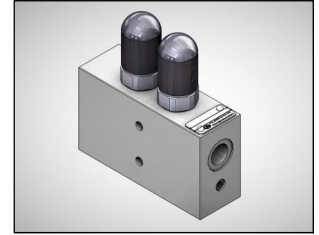
Ref. No. D 28151
Release: 10 / 2022

ENGINEERING - 1 of 2

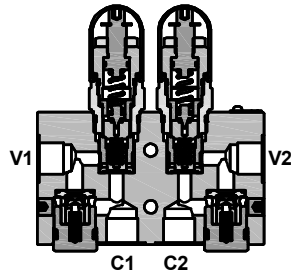
A Polyhydron Group Company

Description

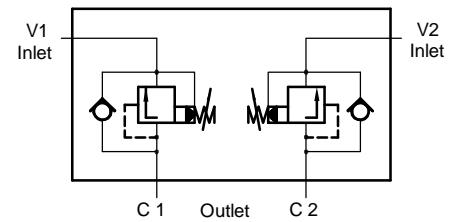
Duel counter balance valves 2CB06T03 are seat type valves. They offer free flow from their port **V1** to Port **C1** and give leak free closure in opposite direction upto a predetermined cracking pressure. The predetermined cracking pressure can be adjusted within its maximum specified range.



Section



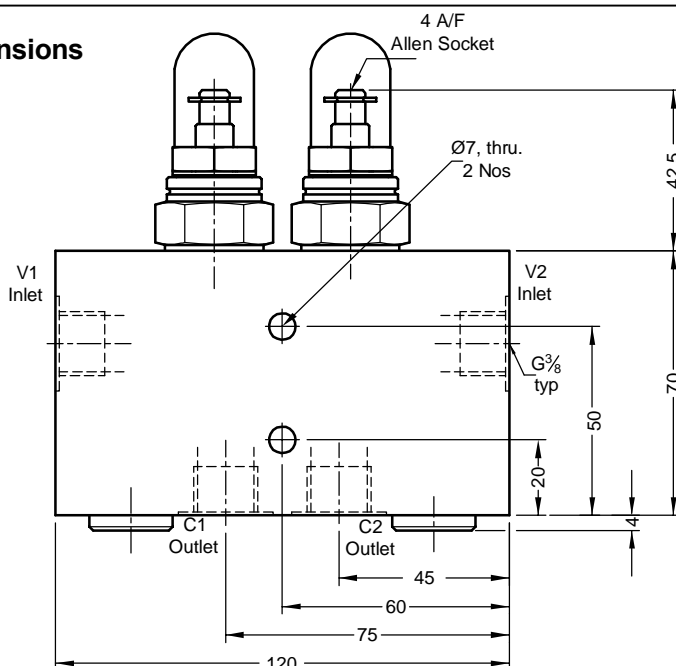
Hydraulic symbol



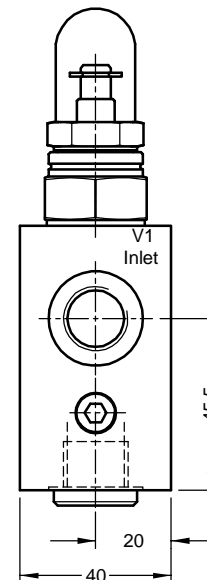
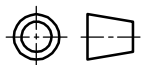
Technical specifications

Construction	:	Direct acting , Seat type, Internally pilot operated.
Mounting style	:	Threaded port body
Inlet and outlet ports size	:	G $\frac{3}{8}$.
Flow direction	:	Free flow from V1 to C1
	:	Piloted flow in opposite direction.
Check valve Cracking pressure	:	1 bar.
Working pressure	:	315 bar for all Ports.
Hydraulic medium	:	Mineral oil.
Temperature range	:	-20°C to + 80°C.
Viscosity range	:	10 cSt to 380 cSt.
Fluid cleanliness required	:	ISO 4406 20/18/15 or better.
Max. flow handling capacity	:	30 l/min.
Mass approx.	:	2.42 Kg.

Unit dimensions



Dimensions in mm.



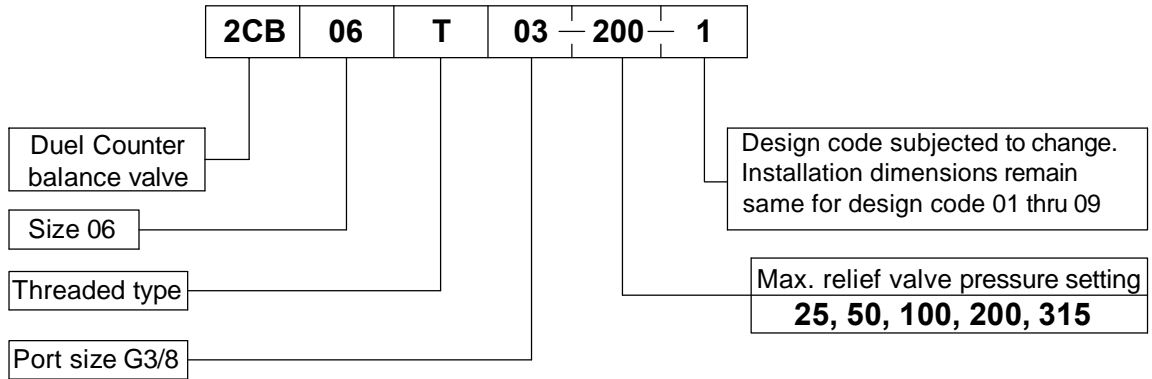
polyhydron pvt. ltd.

78-80, Machhe Industrial Estate,
Machhe, Belgaum - 590 014. INDIA.

Phone : +91-(0)831- 2411001
Fax : +91-(0)831- 2411002
E-mail : polyhydron@gmail.com
Website : www.polyhydron.com



Ordering code



All rights reserved.
Subject to change without prior notice.
Due to continuous improvement in the design of the product, the actual product supplied may look different than shown above.
For critical applications, please ask for certified installation drawing.