



A Polyhydon Group Company

PILOT OPERATED  
PRESSURE REDUCING VALVE.  
MODULAR CONSTRUCTION  
Model : MPPM\*06

ENGINEERING

1 of 2

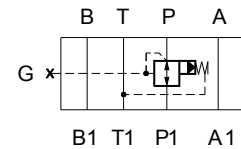
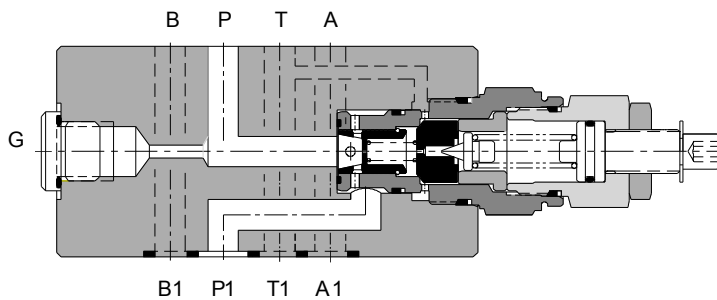
Ref. No. D09247  
Release 07/2013

Description

Valve model MPPM\*06 are Pilot operated pressure reducing valves, offering reduced pressure at it's out let port. The pressure adjustment can be made by loosening the lock nut and turning the setting screw in clock wise direction to increase the pressure.  
The interface conforms to ISO 4401, Size 06.



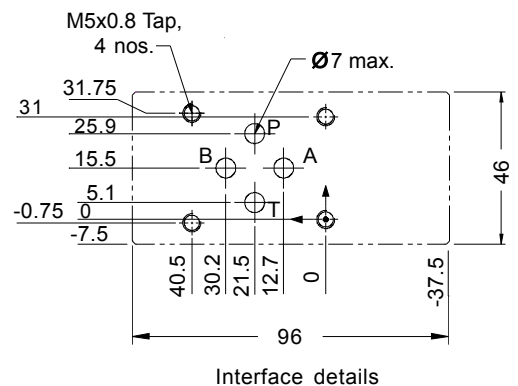
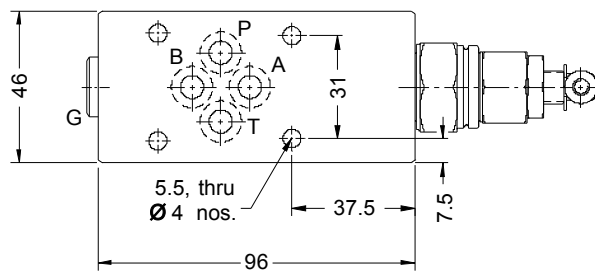
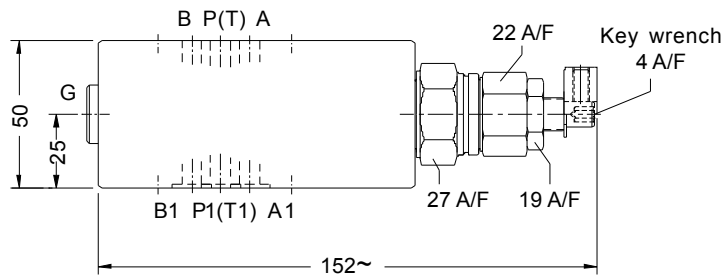
Section



Hydraulic symbol

Unit Dimensions

Dimensions in mm.



Note :

Surface roughness : Ra value is equal to or better than 0.8 µm  
Surface flatness : 0.01 - 100 mm.

**Polyhydon Pvt. Ltd.**  
78-80, Machhe Industrial Estate,  
Machhe, Belgaum - 590 014. INDIA.

**Phone** : +91-(0)831-411001  
**Fax** : +91-(0)831-411002  
**E-mail** : polyhydon@gmail.com  
**Website** : www.polyhydon.com



A Polyhydron Group Company

PILOT OPERATED  
PRESSURE REDUCING VALVE.  
MODULAR CONSTRUCTION  
Model : **MPPM\*06**

ENGINEERING

2 of 2

Ref. No. D09247

**Technical specifications**

Construction .....	Pilot operated, Modular ( Stakable )
Mounting style .....	Conforming to ISO 4401 - AB - 03 - 4 - A
Mounting position .....	Optional.
Direction of flow .....	As indicated by the hydraulic symbol.
Operating pressure .....	315 bar for all ports.
Viscosity range .....	10 cSt to 380 cSt.
Fluid temperature range .....	-10 degree C to +80 degree C.
Maximum operating pressure .....	Refer Table no.1.
Nominal flow handling capacity .....	30 lpm.
Nominal leakage flow at ' T ' port .....	~ 0.4 l/min. while in operation.
Mass .....	1.5 Kg. ~
Reverse flow .....	Possible, if pressure does not exceed 90% of set pressure on the valve.

**Ordering code**

MPPM S 06 P 100 - 01

Modular construction,  
Pilot operated,  
Pressure reducing valve.

Design code subject to change.  
Installation dimensions remain same  
for design code thru 01 thru 09.

Pressure adjustment with Setscrew S

Pressure adjustment with Handknob H

Pressure Rating ( bar )  
50,100,200 & 315

Size 06

P Reduced pressure at Port P  
\* Other models on specific request