

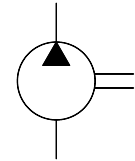
PG2-Series Gear Pumps

- High strength aluminum extruded body.
- Hardened and ground integral gear shaft.
- Special aluminum alloy bush bearing.
- Axially balanced for high volumetric efficiency in excess of 95%.
- 12 teeth design with modified profile for low noise..



Specifications

Model Number	Geometric Displacement cm ³ /rev.	Maximum Pressure Kg/cm ²		Shaft Speed Range r/min.		Mass (Kg.) (Approx.)
		Continuos	Intermittent	Max.	Min.	
PG2-151	15.1	207	225	3000	550	7.0
PG2-213	21.3			3000	600	7.5
PG2-273	27.3					
PG2-318	31.8					
PG2-363	36.3	174	200	2500	600	8.0
PG2-443	44.3					
PG2-478	47.8					
PG2-667	66.7					9.5



Graphic Symbol

Model Number Designation

PG2	-151	-P	-2	-F	-B	-R	-10	80
Series	Size	Shaft	Mounting	Port	Driven Shaft Seal	Direction of Rotation (Viewed from Shaft End)	Design Number	Design Std.
PG2	151	P: Straight with Snap ring	2: SAE 'B'-2 Bolt	F: Flange Port P: BSPF Port	B:Nitrile V:Viton *	R: Clockwise L: Counter Clockwise	10	80
	213							
	273							
	318							
	363							
	443							
	478							
	667							

* Consult factory for availability.

Spare Parts List

List of Seals

Sl No.	Name of Parts	Part Numbers		Qty.
		Nitrile	Viton	
1	Back up seal	PG2 11 23	PG2 11 23	2
2	Body end seal	PG2 11 22	PG2 11 24	2
3	Oil seal	ISD 25407	ISD 25407	1

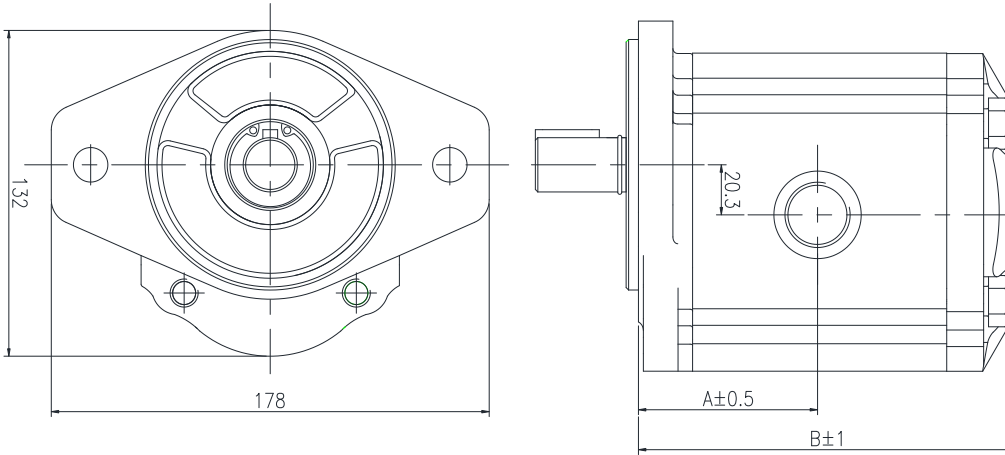
Seals

B: Nitrile (Temp. range:- 15°C + 80°C)
V: Viton (Temp. range:- 10°C + 140°C)

Note: When ordering the seals, please specify the seal kit number
KS-PG2-B for Nitrile
KS-PG2-V for Viton

General Arrangement

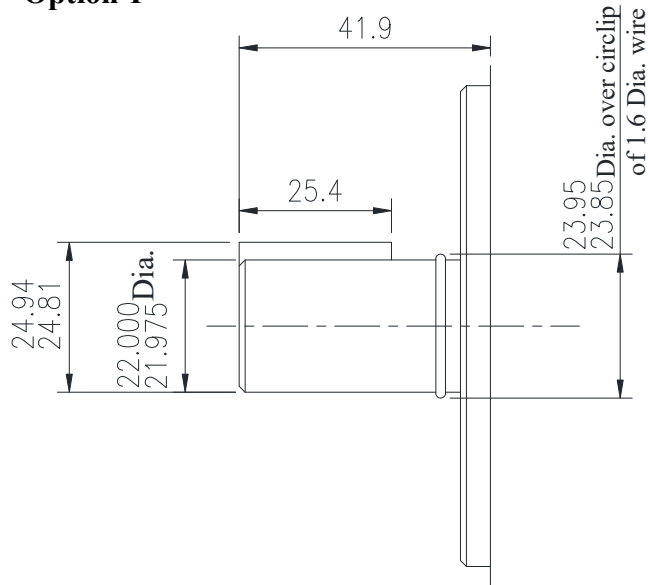
DIMENSIONS IN MILLIMETRES



Model Number	A	B
PG2-151	57.8	121.6
PG2-213	61.7	128.4
PG2-273	65.0	135.0
PG2-318	67.5	140.0
PG2-363	70.0	144.9
PG2-443	74.4	153.7
PG2-478	76.3	157.6
PG2-667	86.7	178.4

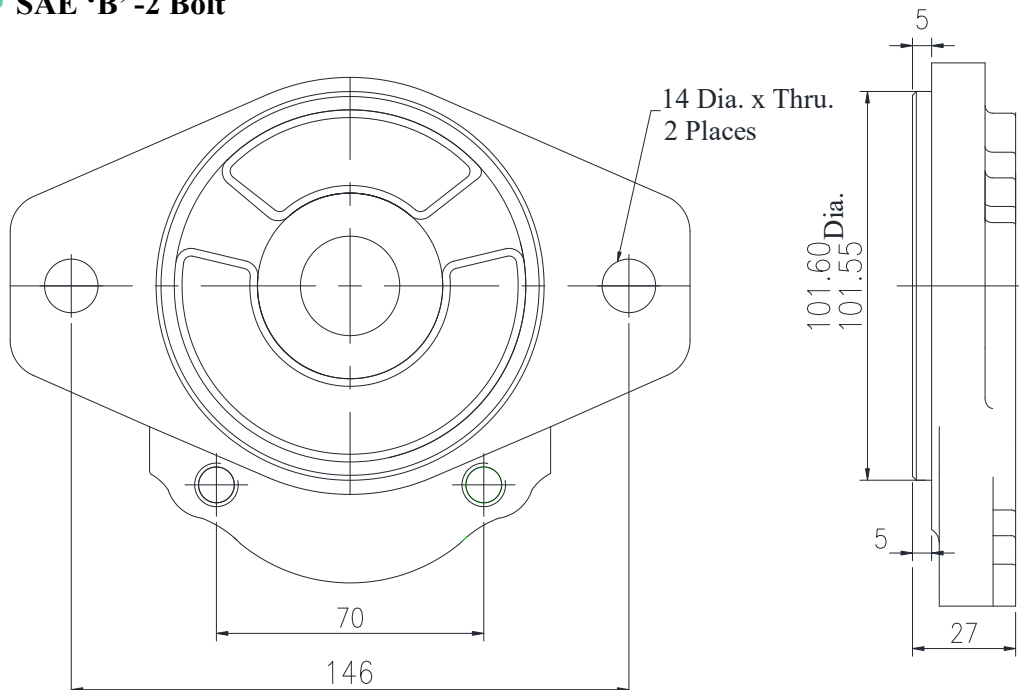
Shaft Details

Option-P



Mounting Details

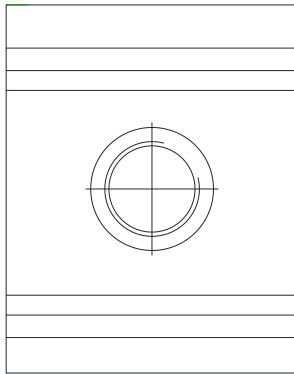
SAE 'B' -2 Bolt



Ports

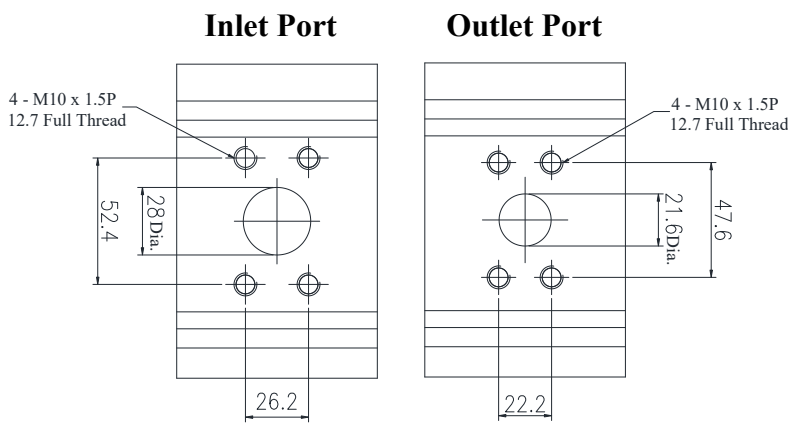
DIMENSIONS IN MILLIMETRES

● P : BSPF Port



Model Number	P: BSP.F Ports	
	INLET	OUTLET
PG2 - 151	1"	3/4"
PG2 - 213	1"	3/4"
PG2 - 273	1"	3/4"
PG2 - 318	1"	3/4"
PG2 - 363	1"	3/4"
PG2 - 443	1"	3/4"
PG2 - 478	1"	3/4"
PG2 - 667	1"	1"

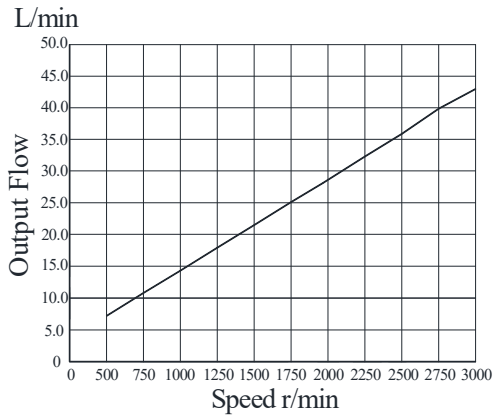
● F : Flange Port



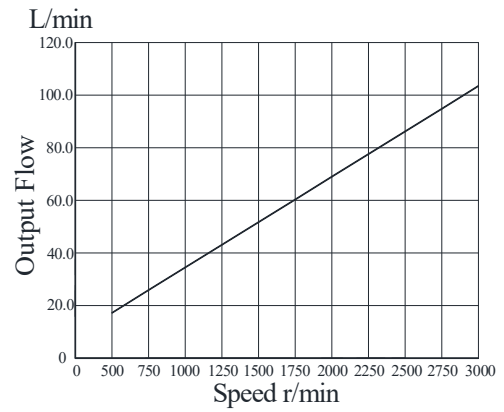
Model Number	F: Flange Ports	
	INLET	OUTLET
PG2 - 151	Ø28	Ø21.6
PG2 - 213	Ø28	Ø21.6
PG2 - 273	Ø28	Ø21.6
PG2 - 318	Ø28	Ø21.6
PG2 - 363	Ø28	Ø21.6
PG2 - 443	Ø28	Ø21.6
PG2 - 478	Ø28	Ø21.6
PG2 - 667	Ø28	Ø21.6

Speed Vs. Flow

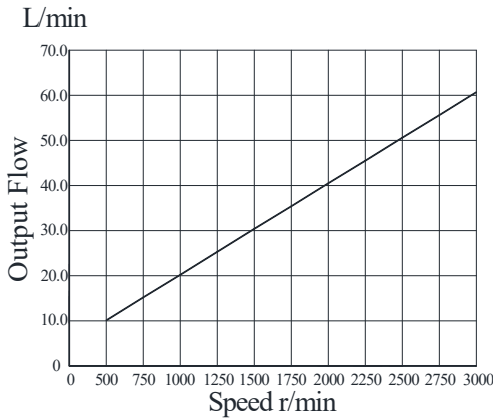
PG2-151



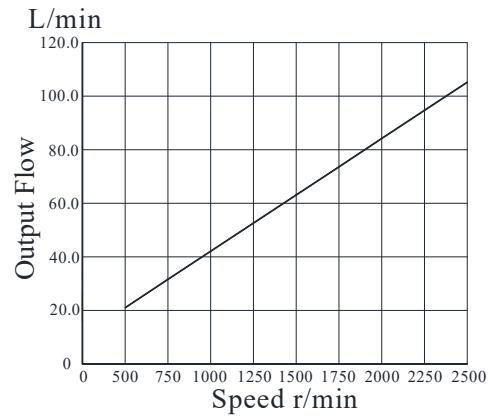
PG2-363



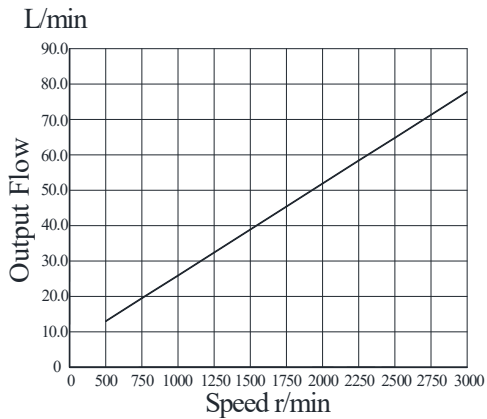
PG2-213



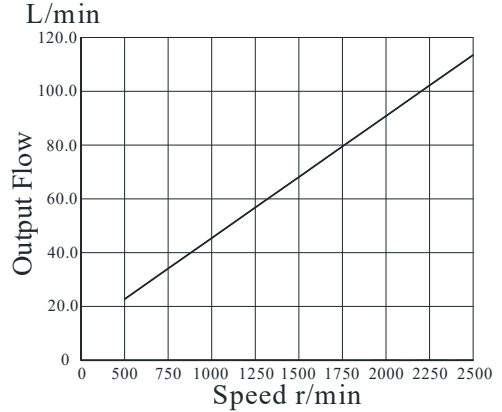
PG2-443



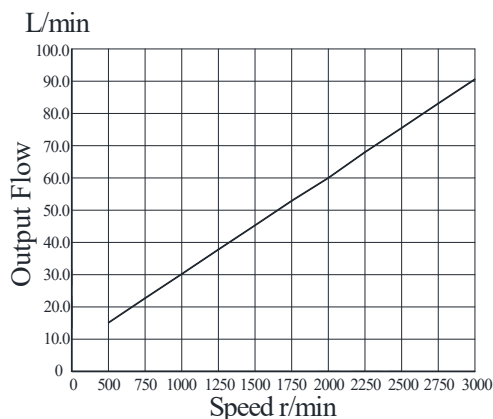
PG2-273



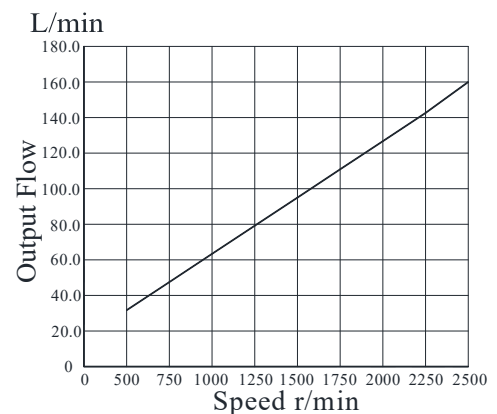
PG2-478



PG2-318

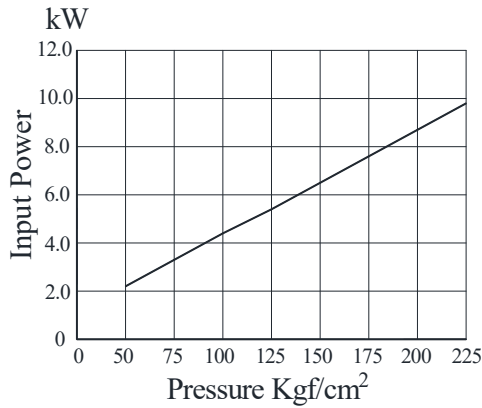


PG2-667

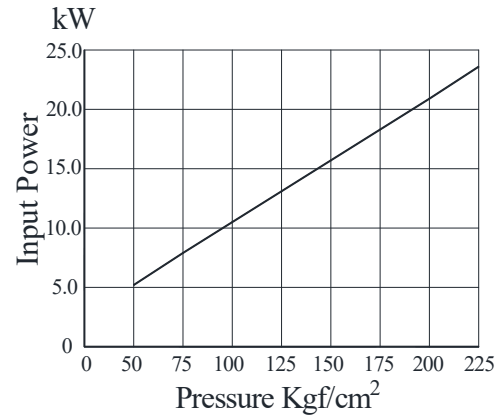


Pressure Vs. Input Power

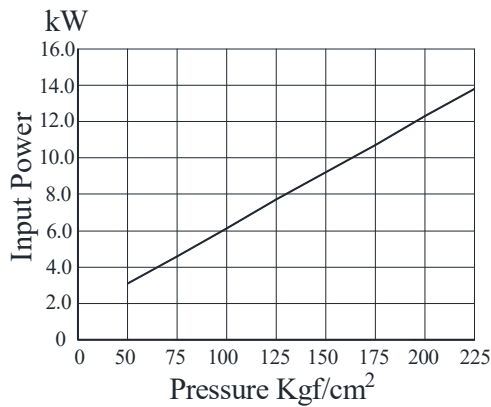
● **PG2-151**



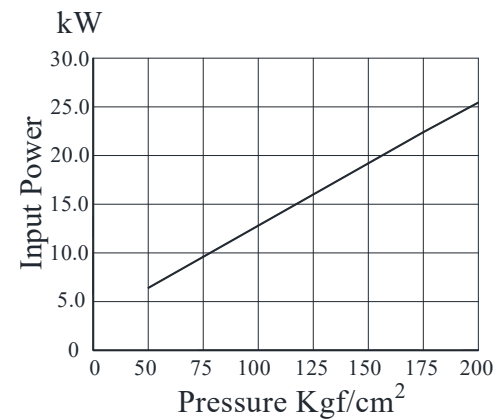
● **PG2-363**



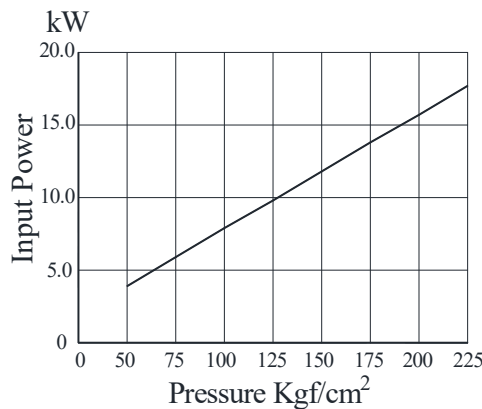
● **PG2-213**



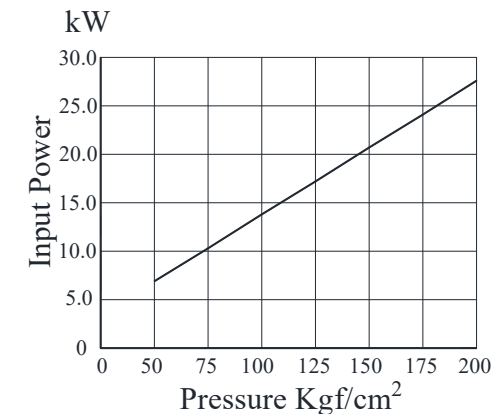
● **PG2-443**



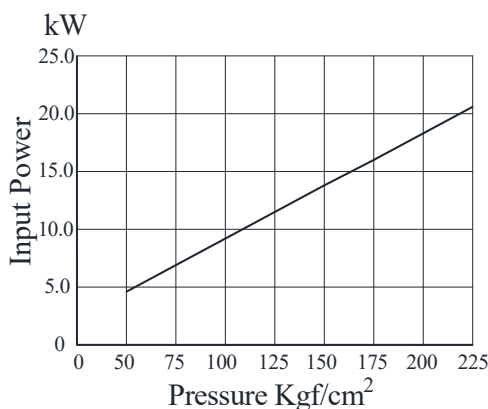
● **PG2-273**



● **PG2-478**



● **PG2-318**



● **PG2-667**

