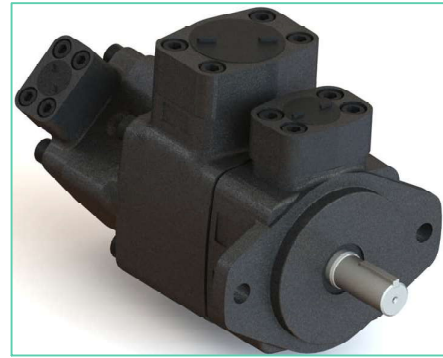
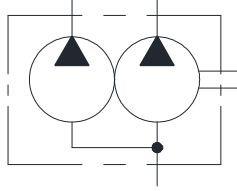


PVM 1050 Series Double Vane Pumps

These double pumps consist of one PVM1T and one PVM50 series single pumps combined in tandem within a single housing and driven by a common shaft. Fluid delivered from the two separate ports can be either supplied to separate or common circuits. These pumps are used in mobile application.

Graphic symbol



Specifications

Model Number	Small Volume Pump Geometric Displacement cm ³ /rev.	Large Volume Pump Geometric Displacement cm ³ /rev.	Max. Opr. Pressure Kg/cm ²	Output Flow and Input Power	Shaft Speed Range r/min		Mass (Approx.) Kg.	
					Max.	Min.	Flange Mounting	Foot Mounting
PVM1050	Refer Specification in Page No. 103	Refer Specification in Page No. 123	210	Refer Page 106, 107, 110, 111 & 112*	2000	600	17.75	20.56

* Applicable to Large Volume Pump Model Number PVM50-45 & PVM50-51 refer page no. 125.

Model Number Designation

F-	PVM1050	-L	-F	-4	-39	-R	E	A	A	-12	80H01
Special Seals **	Series Number	Mounting	Type of Pipe Connection	Small Volume Pump Nominal Delivery	Large Volume Pump Nominal Delivery	Direction of Rotation	Small Volume Pump Discharge Position	Large Volume Pump Discharge Position	Suction Port Position	Design* No.	Design Std.
F: For Phosphate Ester Type Fluids. (omit if not required)	PVM1050	L: Foot Mounting F: Flange Mounting	F: Flange Connection	4, 6 8, 10 12, 15 17	13, 20 26, 30 36, 39 45, 51	R: Clockwise (Normal) L: Anticlockwise				12	80H01

* Design numbers subject to change from 10 to 19, but installation dimensions remain as shown.

* For instructions regarding changing the port positions, consult YUKEN INDIA LTD.

** Before ordering the Special Seals, consult YUKEN INDIA LTD.

Cartridge Kit Model Number

● Large Volume Pump

CPVM1050	-13	-R	-10H01
Model Number	Nominal Delivery	Shaft Rotation	Design No.
CPVM1050	13	R: Clockwise (Normal)	10H01
	20		
	26		
	30	L: Counter-Clockwise	
	36		
	39		
	45		
51			

● Small Volume Pump

CPVM1050	-4	-R	-10H01
Model Number	Nominal Delivery	Shaft Rotation	Design No.
CPVM1050	4	R: Clockwise (Normal)	10H01
	6		
	8		
	10	L: Counter-Clockwise	
	12		
	15		
	17		

* For instructions regarding replacing cartridge kit, consult YUKEN INDIA LTD.

Mounting Details

For mounting details please refer page No. 118.

Flanges

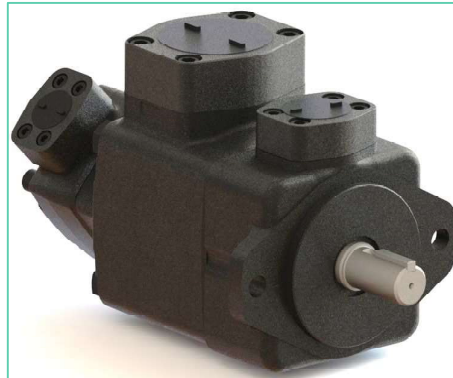
Note: Please refer page no. 725 for flange details.

Spare parts list

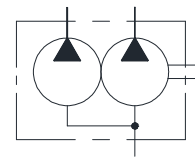
For list of spares please refer page No. 119.

PVM 50150 Series Double Vane Pumps

These double pumps consist of one PVM 50 and one PVM 150 series single pumps combined in tandem within a single housing and driven by a common shaft. Fluid delivered from the two separate ports can be either supplied to separate or common circuits. These pumps are used in mobile application.



Graphic symbol



Specifications

Model Number	Small Volume Pump Geometric Displacement cm ³ /rev.	Large Volume Pump Geometric Displacement cm ³ /rev.	Max. Oper. Pressure Kg/cm ²	Output Flow and Input Power	Shaft Speed Range r/min.		Mass (Approx) Kg.	
					Max.	Min.	Flange Mounting	Foot Mounting
PVM50150	Refer Specification in Page No. 123	Refer Specification in Page No. 126	210	Refer Page 110, 111, 112, 115, 125* & 127* ¹	2000* ²	600	42.5	49

* Applicable to Small Volume Pump Model Number PVM50 – 45 & 51 refer page no. 125.

*1 Applicable to Large Volume Pump Model Number PVM150 - 170 refer page no. 127.

*2 For speeds above 2000 r/min. consult factory for information.

Model Number Designation

F-	PVM50150	-L	-F	-13	-60	-R	E	A	A	-16	80H01
Special Seals **	Series Number	Mounting	Type of Pipe Connection	Small Volume Pump Nominal Delivery	Large Volume Pump Nominal Delivery	Direction of Rotation	Small Volume Pump Discharge Position	Large Volume Pump Discharge Position	Suction Port Position	Design No. *	Design Std.
						As viewed from shaft end					
F: For Phosphate Ester Type Fluids (Omit if not required)	PVM50150	L: Foot Mounting F: Flange Mounting	F: Flange Attachment	13, 20 26, 30 36, 39 45, 51	60, 70 90, 110 140, 170	R: Clockwise (Normal) L: Counter Clockwise				16	80H01

* Design numbers subject to change from 10 to 19, but installation dimensions remain as shown.

* For instructions regarding changing the port positions, consult YUKEN INDIA LTD.

** Before ordering the Special Seals, consult YUKEN INDIA LTD.

Mounting Details

For mounting details please refer page No. 121.

Flanges

Note: Please refer page no. 725 for flange details.

Spare parts list

For list of spares please refer page No. 122.

Cartridge Kit Model Number

● **Large Volume Pump**

CPVM150	-60	-R	-33H01
Model Number	Nominal Delivery	Shaft Rotation	Design No.
CPVM150	60	R: Clockwise (Normal)	33H01
	70		
	80		
	90	L: Counter-Clockwise	
	110		
	140		
	170		

● **Small Volume Pump**

CPVM50150	-13	-R	-14
Model Number	Nominal Delivery	Shaft Rotation	Design No.
CPVM50150	13	R: Clockwise (Normal)	14
	20		
	26		
	30		
	36		
	39	L: Counter-Clockwise	
	45		
	51		

* For instructions regarding replacing cartridge kit, consult YUKEN INDIA LTD.

Cartridge Kit Model Number

Pump Model Numbers	Cartridge Kit Number #	
	Small Volume Pump	Large Volume Pump
PVM1050-※-F-10-※-R※※※-1280H01	CPVM1050-10-R-10H01	CPVM1050-※-R-10H01
PVM1050-※-F-12-※-R※※※-1280H01	CPVM1050-12-R-10H01	
PVM1050-※-F-15-※-R※※※-1280H01	CPVM1050-15-R-10H01	
PVM1050-※-F-17-※-R※※※-1280H01	CPVM1050-17-R-10H01	
PVM50150-※-F-20-※-R※※※-1680H01	CPVM50150-20-L-14	CPVM150-※-R-33H01
PVM50150-※-F-30-※-R※※※-1680H01	CPVM50150-30-L-14	
PVM50150-※-F-36-※-R※※※-1680H01	CPVM50150-36-L-14	
PVM50150-※-F-39-※-R※※※-1680H01	CPVM50150-39-L-14	
PVM50150-※-F-45-※-R※※※-1680H01	CPVM50150-45-L-14	
PVM50150-※-F-51-※-R※※※-1680H01	CPVM50150-51-L-14	

* For instructions regarding replacing cartridge kit, consult YUKEN INDIA LTD.

The above table does not include all combinations of cartridges available.

Only a few representative samples are shown.