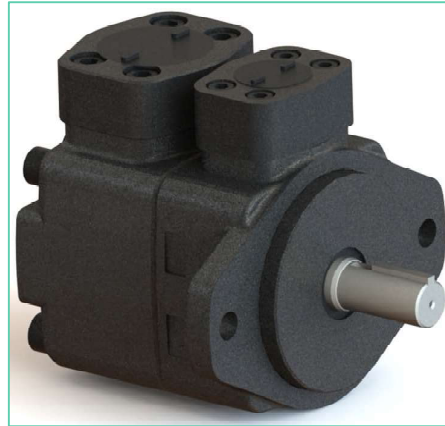
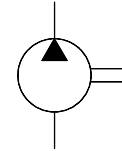


■ PVM 50 - Series Single Vane Pumps

These pumps are widely used as a source of hydraulic power in mobile application. They combine stable performance and robust construction with a wide range of delivery rates.



Graphic Symbol



B

PVM Series
Single Vane Pumps

■ Specifications

Model Number	Geometric Displacement cm ³ /rev.	Max. Opr. Pressure Kgf/cm ²	Output Flow and Input Power	Shaft Speed Range r/min.		Mass (Approx.) Kg.	
				Max.	Min.	Flange Mounting	Foot Mounting
PVM50-13	9.5	210	Ref. Page 110, 111 & 112	2000*	600	12	14.7
PVM50-20	14.5						
PVM50-26	19.4						
PVM50-30	21.5						
PVM50-36	26.5						
PVM50-39	28.3						
PVM50-45	31.6		Ref. Page 125				
PVM50-51	36.7						
PVM50-56	40.5						

* For speeds above 2000 r/min., consult factory for information.

■ Model Number Designation

F-	PVM50	-L	-F	-13	-	-R	A	A	-32	80H01
Special Seals **	Series Number	Type of Mounting	Type of Pipe Connection	Nominal Delivery	Shaft Type	Direction of Rotation	Discharge Port Position	Suction Port Position	Design * Number	Design Standard
As Viewed From Shaft End										
F: For Phosphate Ester Type Fluids (Omit if not required)	PVM50	L: Foot Type F: Flange Type	F: Flange Connection T: Threaded Connection	13 20 26 30 36 39 45 51 56 *1	None: Std. Shaft. 1: Special Shaft (For 51 & 56 Capacity Only)	R: Clockwise (Normal) L: Counter Clockwise			32	80H01

* Design numbers subject to change from 30 to 39, but installation dimensions remain as shown.

* For instructions regarding changing the port positions, consult YUKEN INDIA LTD.

** Before ordering the Special Seals, consult YUKEN INDIA LTD.

*1 Threaded type connection is not available for 56 Capacity.

■ Cartridge Kit Model Number

CPVM50	-13	-R	-31H01
Model Number	Nominal Delivery	Shaft Rotation	Design No.
CPVM50	13	R: Clockwise (Normal)	31H01
	20		
	26		
	30	L: Counter- Clockwise	
	36		
	39		
	45		
	51		
	56		

* For instructions regarding replacing cartridge kit, consult YUKEN INDIA LTD.

■ Mounting Details

For mounting details please refer page No. 109.

■ Flanges

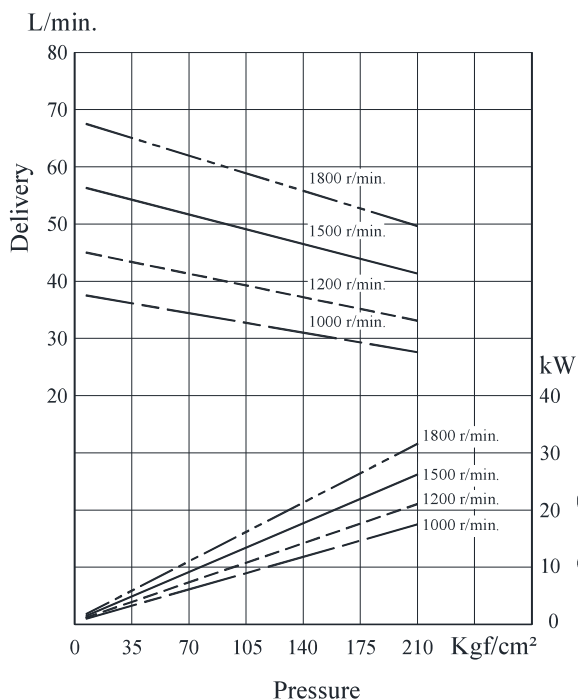
Note: Please refer page no. 749 for flange details.

■ Spare parts list

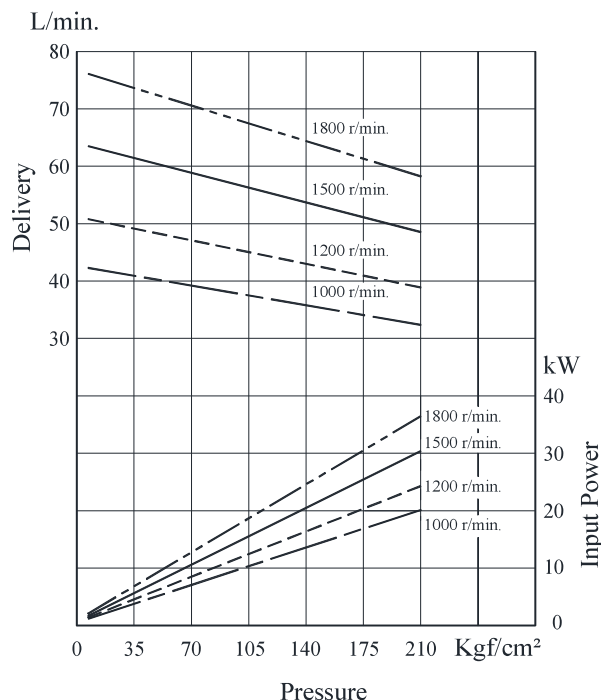
For list of spares please refer page No. 112.

Typical Pump Characteristics Oil Viscosity 20 cSt [ISO VG 32, Temp 50°C]

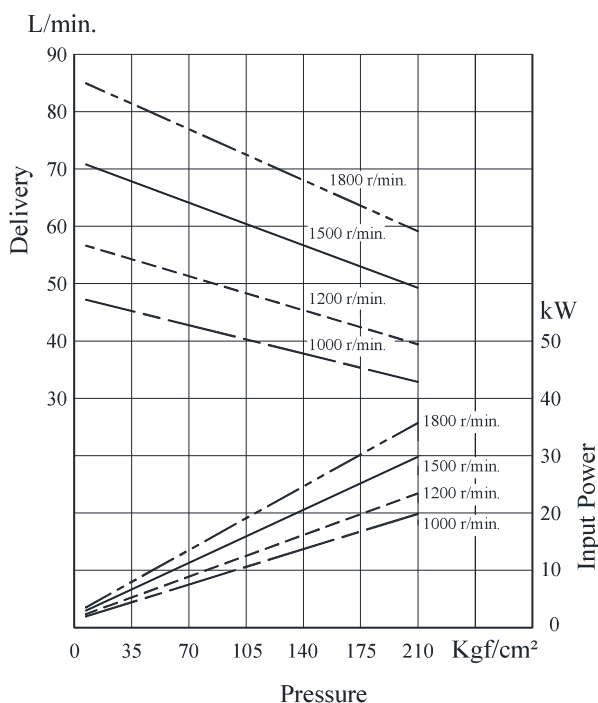
● **PVM50 - 45**



● **PVM50 - 51**



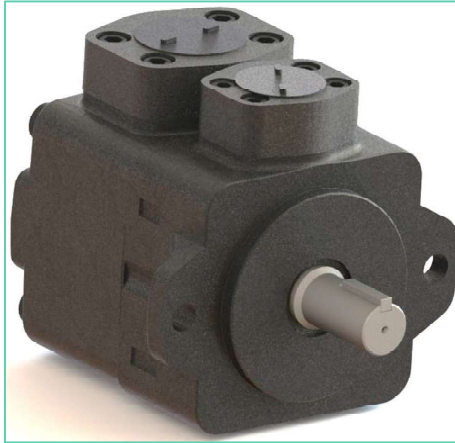
● **PVM50 - 56**



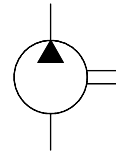
B
PVM Series
Single Vane Pumps

PVM 150 - Series Single Vane Pumps

These pumps are widely used as a source of hydraulic power in mobile application. They combine stable performance and robust construction with a wide range of delivery rates.



Graphic Symbol



Specifications

Model Number	Geometric Displacement cm ³ /rev.	Max. Opr. Pressure Kgf/cm ²	Output Flow and Input Power	Shaft Speed Range r/min.		Mass (Approx.) Kg.	
				Max.	Min.	Flange Mounting	Foot Mounting
PVM150 – 60	47	210	Ref. Page 115 & 116	2000*	600	29.3	35.9
PVM150 – 70	57						
PVM150 – 90	75						
PVM150 – 110	92						
PVM150 – 140	115						
PVM150 – 170	135		Ref. Page 127				

* For speeds above 2000 r/min., consult factory for information.

Model Number Designation

F-	PVM150	-L	-F	-60	-R	A	A	-35	80H01
Special Seals **	Series Number	Type of Mounting	Type of Pipe Connection	Nominal Delivery	Direction of Rotation	Discharge Port Position	Suction Port Position	Design * Number	Design Std
As Viewed From Shaft End									
F: For Phosphate Ester Type Fluids (Omit if not required)	PVM150	L: Foot Type F: Flange Type	F: Flange Connection	60 70 90 110 140 170	R: Clockwise (Normal) L: Counter Clockwise			35	80H01

* Design numbers subject to change from 30 to 39, but installation dimensions remain as shown.

** For instructions regarding changing the port positions, consult YUKEN INDIA LTD.

** Before ordering the Special Seals, consult YUKEN INDIA LTD.

Mounting Details

For mounting details refer page No. 114.

Spare parts list

For list of spares please refer page No. 116.

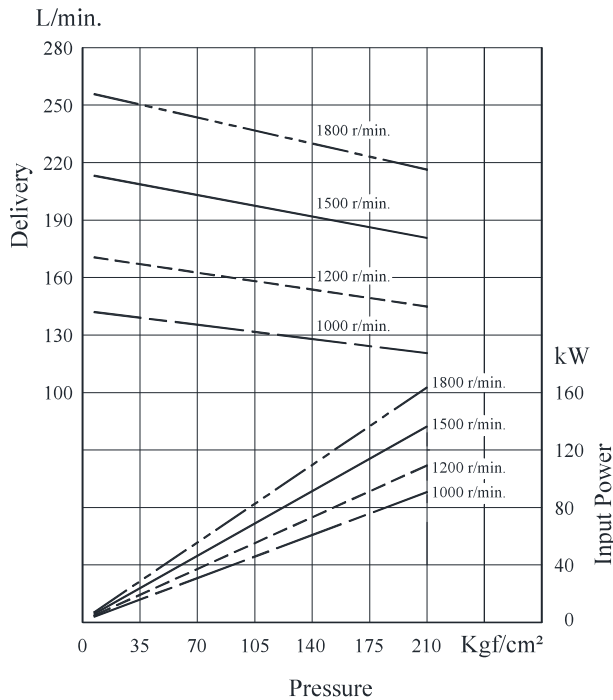
Cartridge Kit Model Number

CPVM150	-60	-R	-33H01
Model Number	Nominal Delivery	Shaft Rotation	Design No.
CPVM150	60	R: Clockwise (Normal)	33H01
	70		
	90		
	110	L: Counter- Clockwise	
	140		
170			

* For instructions regarding replacing cartridge kit, consult YUKEN INDIA LTD.

Typical Pump Characteristics Oil Viscosity 20 cSt [ISO VG 32, Temp 50⁰ C]

● **PVM 150 - 170**



Cartridge Kit Model Number

Pump Model Numbers	Cartridge Kit Number #
PVM50-※-※-13-R※※-3280H01	CPVM50-13-R-31H01
PVM50-※-※-26-R※※-3280H01	CPVR50-26-R-31H01
PVM50-※-※-36-R※※-3280H01	CPVR50-36-R-31H01
PVM50-※-※-45-R※※-3280H01	CPVR50-45-R-31H01
PVM50-※-※-56-R※※-3280H01	CPVR50-56-R-31H01
PVM150-※-F-70-R※※-3580H01	CPVM150-70-R-33H01
PVM150-※-F-110-R※※-3580H01	CPVM150-110-R-33H01
PVM150-※-F-140-R※※-3580H01	CPVM150-140-R-33H01
PVM150-※-F-170-R※※-3580H01	CPVM150-170-R-33H01

For instructions regarding replacing cartridge kit, consult YUKEN INDIA LTD.

The above table does not include all combinations of cartridges available. Only a few representative samples are shown.

Flanges

Note: Please refer page no. 725 for flange details.