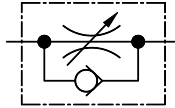


**Throttle and Check Valve**

This valve is used to regulate an actuator speed in a circuit where line pressure is almost steady and small fluctuation of oil flow due to pressure changes is permitted. Integrated check valve allows reversed free flow from outlet to inlet port.



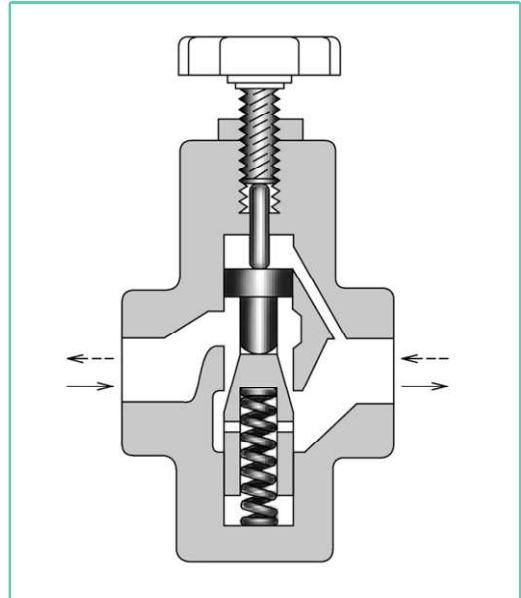
**Graphic Symbol**



**Specifications**

| Model Numbers       |                | Rated Flow L/min. | Max. Operating Pressure Kgf/cm <sup>2</sup> | Mass Kg. |
|---------------------|----------------|-------------------|---|----------|
| Threaded Connection | SRCT-03-※-4180 | 30                | 210   | 1.2      |
|                     | SRCT-06-※-4180 | 85                | 210   | 3.2      |
| Sub-Plate Mounting  | SRCG-06-※-41   | 85                | 210   | 4.0      |

Rated flow stands for approximate flow rate when the pressure drop between inlet and outlet ports of the valve is fully opened condition becomes 3Kgf/cm<sup>2</sup> maximum at fluid's specific gravity of 0.85 and kinematic viscosity of 20 cSt (100SSU)



**Model Number Designation**

| <b>F</b>  | <b>SRC</b>                              | <b>T</b>                         | <b>-03</b> | <b>-H</b>   | <b>-41</b>    | <b>※</b>        |
|---|---|----------------------------------|------------|---|---------------|-----------------|
| Special Seals **  | Serial Number                           | Type of Mounting                 | Valve Size | Pr. Differential Kgf/cm <sup>2</sup>  | Design Number | Design Standard |
| <b>F:</b><br>For Phosphate Ester Type Fluids.<br>(Omit if not required) | <b>SRC:</b><br>Throttle And Check Valve | <b>T:</b><br>Threaded Connection | <b>03</b>  | <b>H:</b> High Pr. Differential 50 ~ 210<br><b>L:</b> Low Pr. Differential 5 ~ 50 | <b>41</b>     | <b>80</b>       |
|   |   |                                  | <b>06</b>  |   |               | ---             |
|   |   | <b>G:</b><br>Sub-Plate Mounting  | <b>06</b>  |   |               | ---             |

\* Also available with Hand knob type on request.  
\*\* Before ordering the Special seals, consult YUKEN INDIA LTD.

**Sub-plate**

| Valve Model Number | Sub-Plate Model Number | Thread Size | Mass Kg. |
|--------------------|------------------------|-------------|----------|
| SRCG-06            | SRGM-06-4080           | 3/4 BSP.F   | 2.4      |
|                    | SRGM-06X-4080          | 1 BSP.F     | 3.0      |

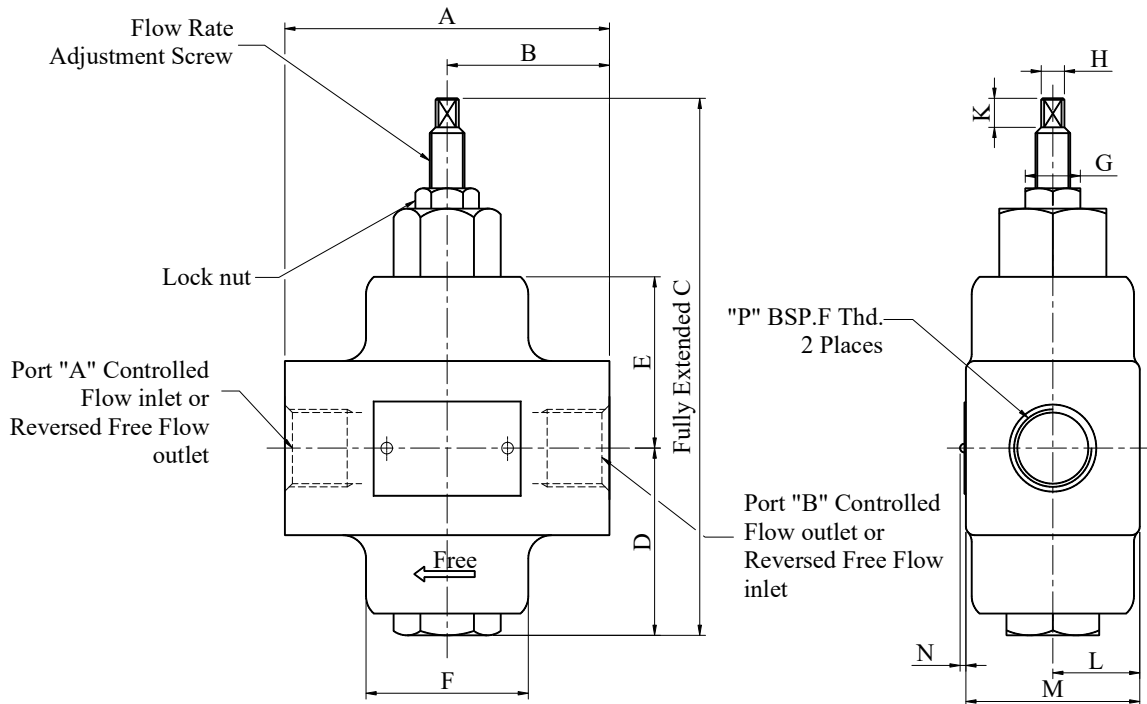
- Sub-plate are available, Specify sub-plate model from the table above. When sub-plates are not used, the mounting surface should have a good machined finish.

**Attachment**

**Mounting Bolts**

| Valve Model Number | Socket Head Cap Screw | Qty | Bolt Kit Model Number |
|--------------------|-----------------------|-----|-----------------------|
| SRCG-06            | M10 x 70 Lg.          | 4   | BKSRG-06-40           |

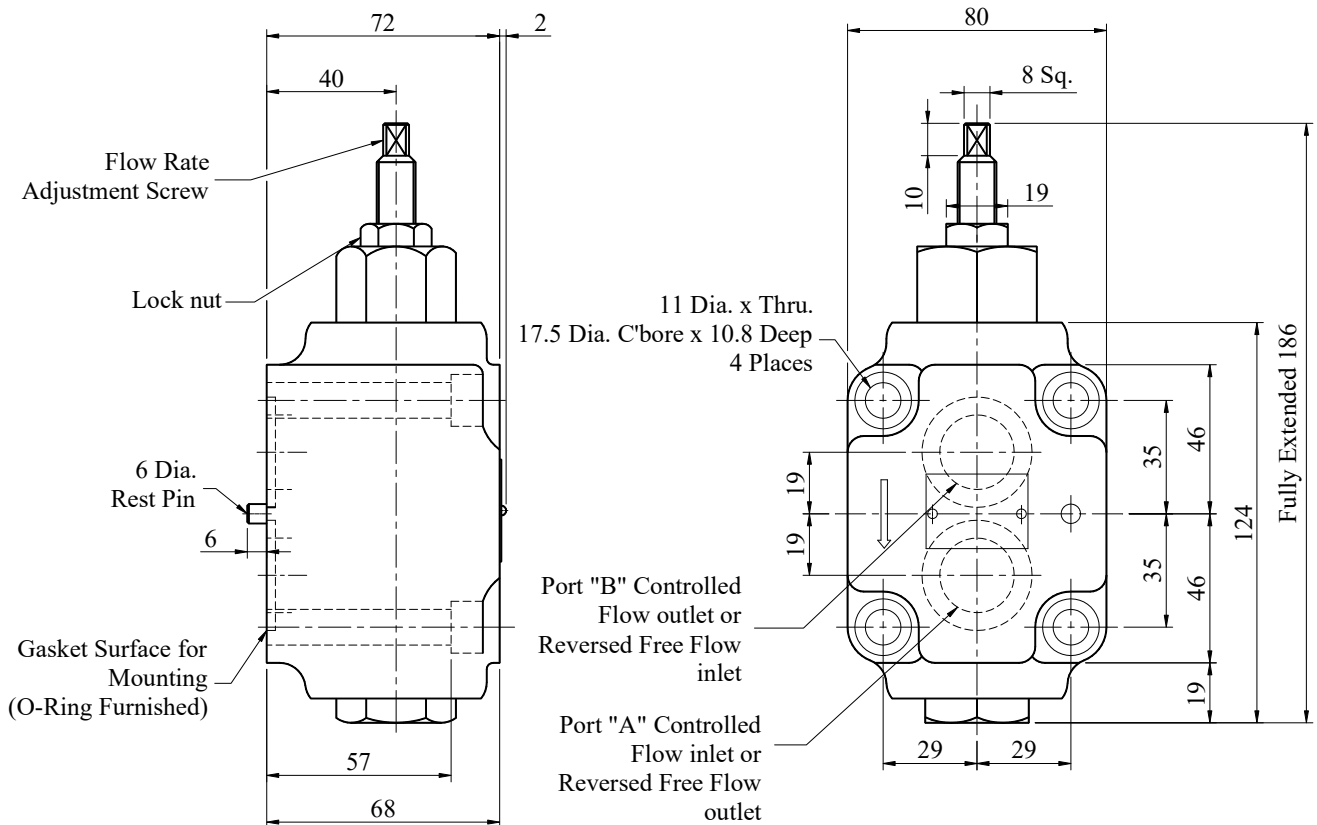
• SRCT-03-※-4180  
06



| Model No.      | A   | B  | C   | D  | E  | F       | G  | H     | K  | L  | M  | N | P         |
|----------------|-----|----|-----|----|----|---------|----|-------|----|----|----|---|-----------|
| SRCT-03-※-4180 | 82  | 41 | 151 | 58 | 54 | 40 Dia. | 19 | Sq. 8 | 10 | 20 | 40 | 2 | 3/8 BSP.F |
| SRCT-06-※-4180 | 112 | 56 | 186 | 66 | 59 | 56 Dia. | 19 | Sq. 8 | 10 | 30 | 60 | 2 | 3/4 BSP.F |

DIMENSIONS IN MILLIMETRES

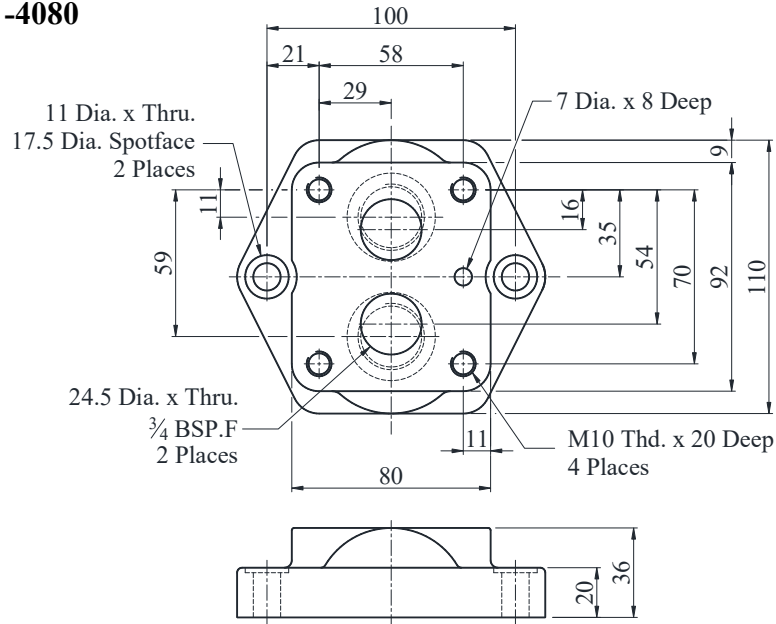
• SRCG-06-※-41



**Mounting Sub-Plate**

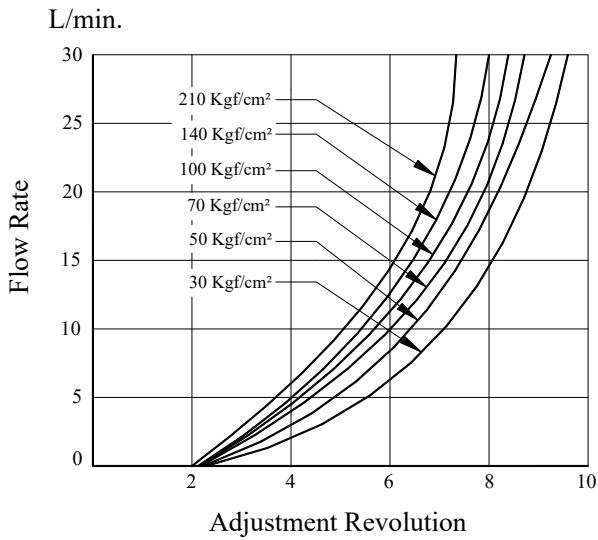
**DIMENSIONS IN MILLIMETRES**

● **SRGM-06-※-4080**

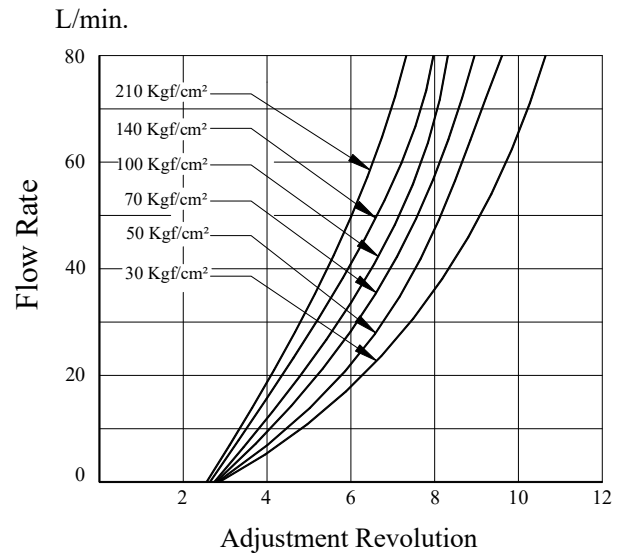


**Metered Flow Vs. Adjustment Revolutions**

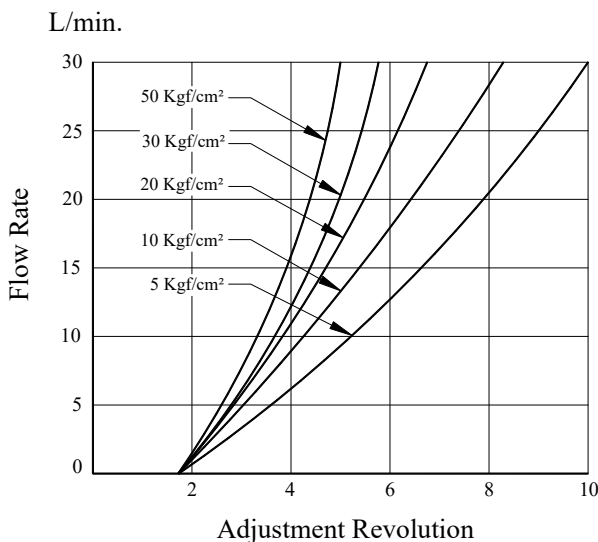
**SRCT-03-H-4180**



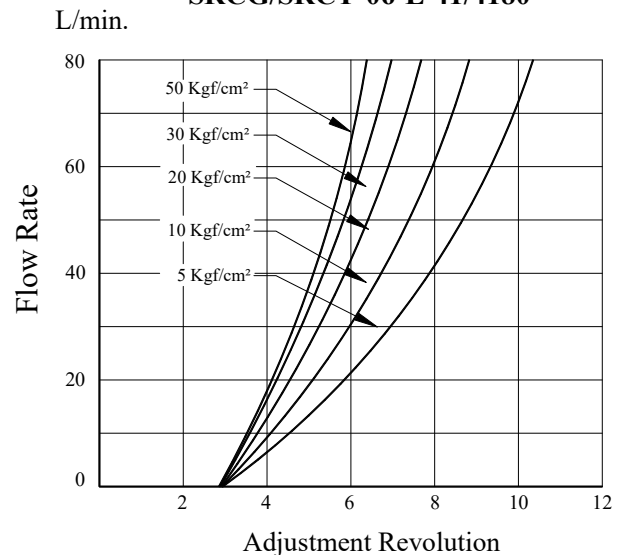
**SRCG/SRCT-06-H-41/4180**



**SRCT-03-L-4180**

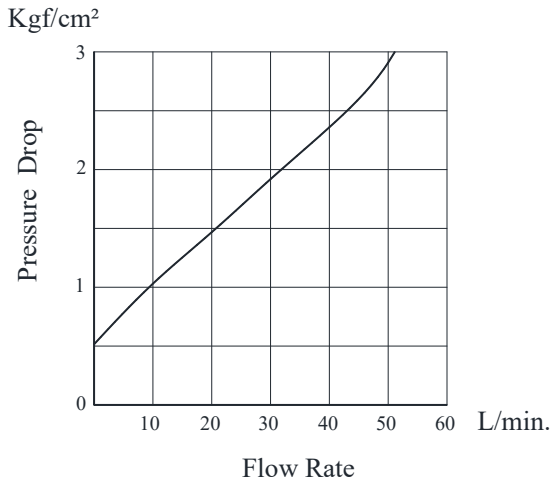


**SRCG/SRCT-06-L-41/4180**

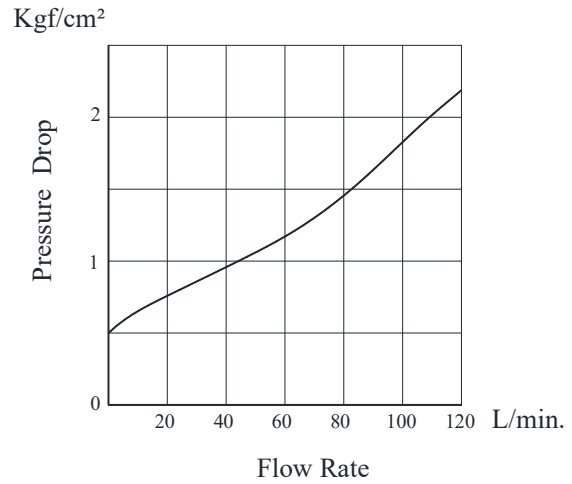


● Pressure Drop for Reverse Free Flow

SRCT-03-※ -41/4180



SRCG/SRCT-06-※ -41/4180



■ Spare Parts List

● List of Seals

| Sl. No. | Name of Parts | Part Numbers |     |           |     |           |     |
|---------|---------------|--------------|-----|-----------|-----|-----------|-----|
|         |               | SRCT-03      | Qty | SRCT-06   | Qty | SRCG-06   | Qty |
| 1       | O-Ring        | SO-NA-P12    | 1   | SO-NA-P14 | 1   | SO-NA-P14 | 1   |
| 2       | O-Ring        | SO-NB-P18    | 1   | SO-NB-P24 | 2   | SO-NB-P24 | 2   |
| 3       | O-Ring        | -            | -   | -         | -   | SO-NB-P28 | 2   |
| 4       | Back up Ring  | SO-BB-P12    | 1   | SO-BB-P14 | 1   | SO-BB-P14 | 1   |

Note : When ordering the seals, please specify the seal kit number from the table below.

● List of Seals Kits

| Model Numbers | Seal Kit Numbers |
|---------------|------------------|
| SRCT-03       | KS-SRCT-03-4180  |
| SRCT-06       | KS-SRCT-06-4180  |
| SRCG-06       | KS-SRCG-06-41    |