

**Pressure Switches**

- Pressure switches are used to make or break an electrical circuit at a preset hydraulic pressure.
- The Pressure switch has two microswitches, each of which is capable of electrically detecting high pressure or low pressure setting. The microswitch structure is dust and drip proof structure.

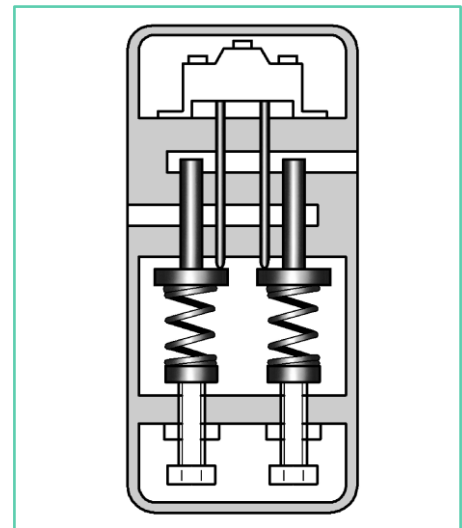


**Specifications**

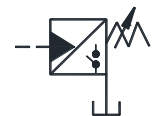
Model number	Max. operating Pressure Kgf/cm <sup>2</sup>	Mass Kg.
Sub-Plate Mounting		
SG-02-※-2080	350	4.5

**Micro Switch Ratings**

Loads	AC		DC
	Normally Closed Contact	Normally Open Contact	
Inductive Load			0.05A – 125V 0.03A – 250V
Electric Motor Incandescent Lamp Electromagnetic Coil Load	4.5A – 125V 3.0A – 250V	2.5A – 125V 1.5A – 250V	-----



Graphic Symbol



**Model Number Designation**

F-	S	G	-02	-B	-20	80
Special Seals**	Series number	Type of Mounting	Valve Size	Pres. Adj. Range Kgf/cm <sup>2</sup>	Design Number	Design Standard
<b>F:</b> Special Seals for Phosphate Ester Type Fluids. (Omit if not required)	<b>S:</b> Pressure Switches	<b>G:</b> Sub-Plate mounting	<b>02</b>	<b>B:</b> 7-70 <b>C:</b> 35-140 <b>H:</b> 70-210 <b>K:</b> 105-350	<b>20</b>	<b>80</b>

\*\* Before ordering the Special Seals, consult YUKEN INDIA LTD.

**Instructions**

- **Pressure Adjustments**  
Remove the front cover and loosen the lock nut. Turn the pressure adjustment screw slowly clockwise for higher pressure or anti-clockwise for lower pressures. After adjustments, be sure to tighten the lock nut and replace the front cover in position.
- **Drain piping**  
Connect the drain pipe not to any other line but directly to the tank.

**Attachment**

- **Mounting Bolts**

Valve Model Number	Socket Head cap Screw	Qty.	Bolt Kit Ordering Code
SG-02-2080	M6 x 60 Lg.	2	BKSG-02-20

**Sub-plate**

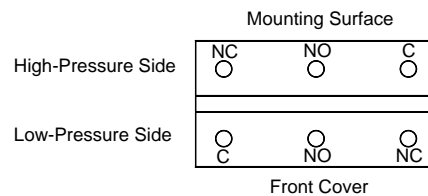
Valve Model Number	Sub-Plate Model Number	Thread Size	Mass Kg.
SG-02	SGM-02-2080	1/4 BSP.F	1.1

- Sub-plates are available. Specify sub-plate model from the table above. When sub-plates are not used, the mounting surface should have a good machined finish.

**Pressures and microswitch contacts**

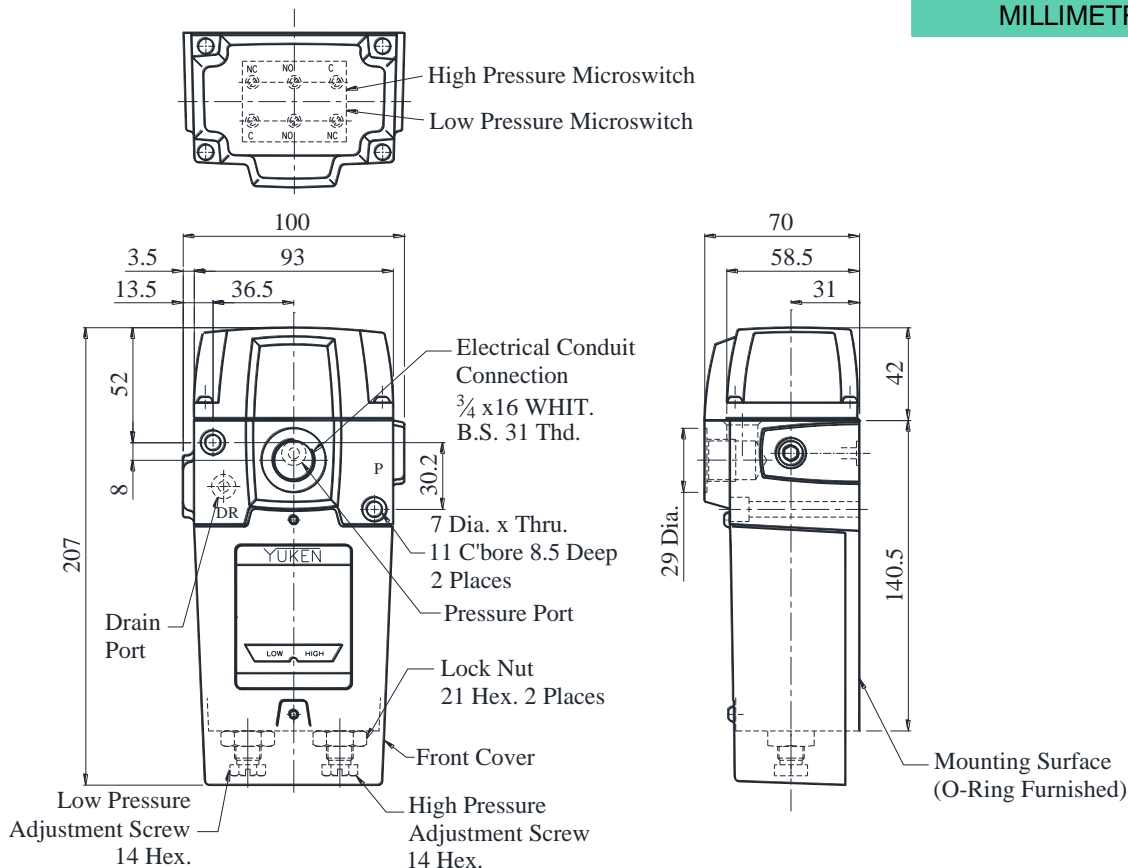
Pressure	Contact point	
	High pressure Microswitch	Low Pressure Microswitch
Under the Setting Pressure		
Above the Setting Pressure		

**Microswitch terminals**



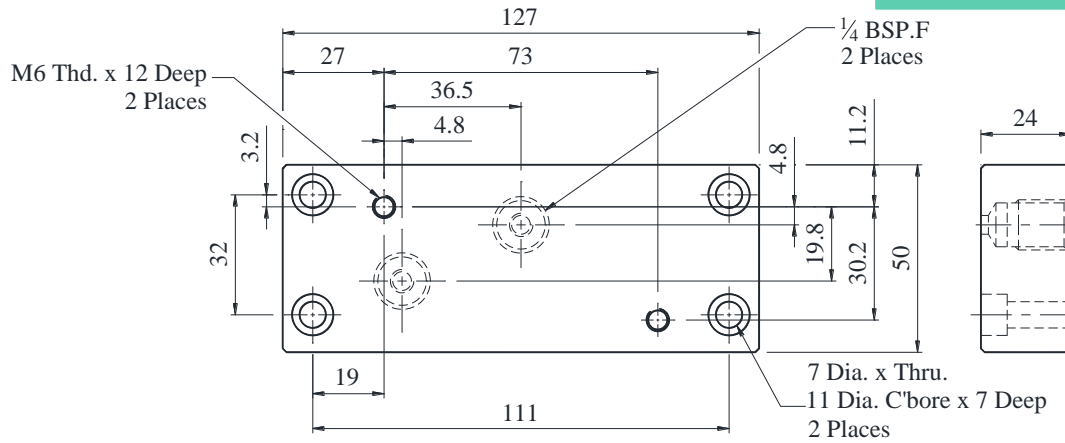
**SG-02-※-2080**

**DIMENSIONS IN MILLIMETRES**

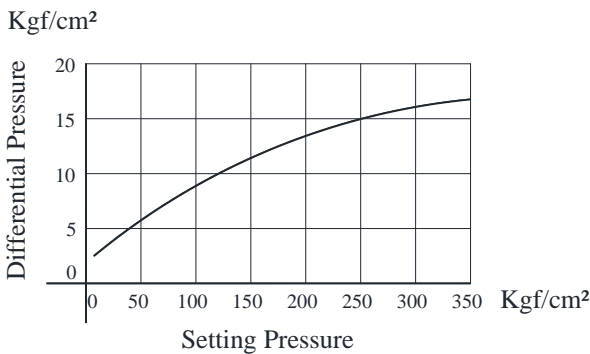


● **Sub-Plate : SGM-02-2080**

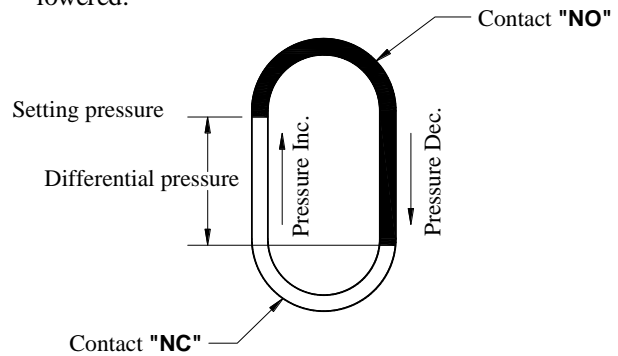
**DIMENSIONS IN MILLIMETRES**



**Differential Pressure Characteristic**



\* The differential pressure means the pressure difference caused between at NC and at NO when one of the pressure on the high and low-pressure side is raised and then lowered.



**Model Number Designation**

Example 1 Solenoid is required to be energized at low pressure and De-energized at high pressure setting.	Example 2 Solenoid is required to be De-energized at low pressure and energized at high pressure setting.	Example 3 Electric motor is required to be started at low Pressure and stopped at high pressure setting.
<b>Schematic Diagram</b>	<b>Wiring Diagram</b>	<b>Schematic Diagram</b>
<b>Wiring Diagram</b>	<b>Schematic Diagram</b>	<b>Wiring Diagram</b>
<b>Schematic Diagram</b>	<b>Wiring Diagram</b>	<b>Schematic Diagram</b>
<b>Wiring Diagram</b>	<b>Schematic Diagram</b>	<b>Wiring Diagram</b>

**Spare Parts List**

● **List of Seals**

Sl. No.	Name of Parts	Part Number	Quantity
1	O-Ring	SO-NA-P5	2
2	O-Ring	SO-NB-P8	2
3	Insulation cloth	V*4-0795-0	2
4	Gasket	V*4-0792-0	1

Note : When Ordering the seals, please specify the seal kit number KS-SG-02-2080.

**Pressure Switches**